

# FAD (Face Auto Detection)

Smart and quick detection for optimal fetal face demonstration

Tips & Tricks

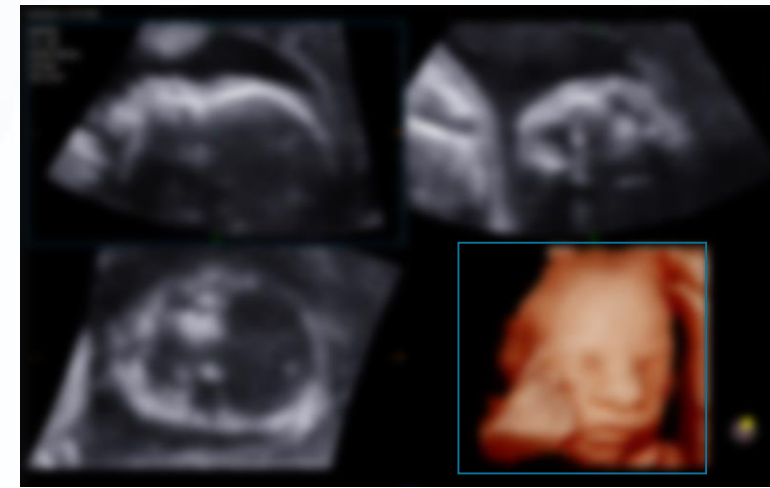
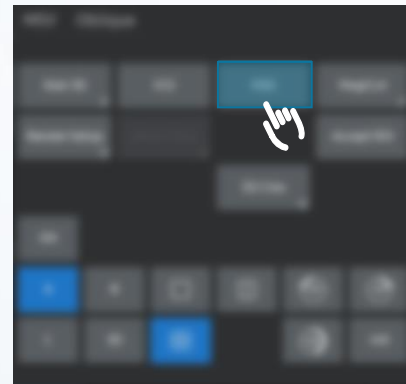
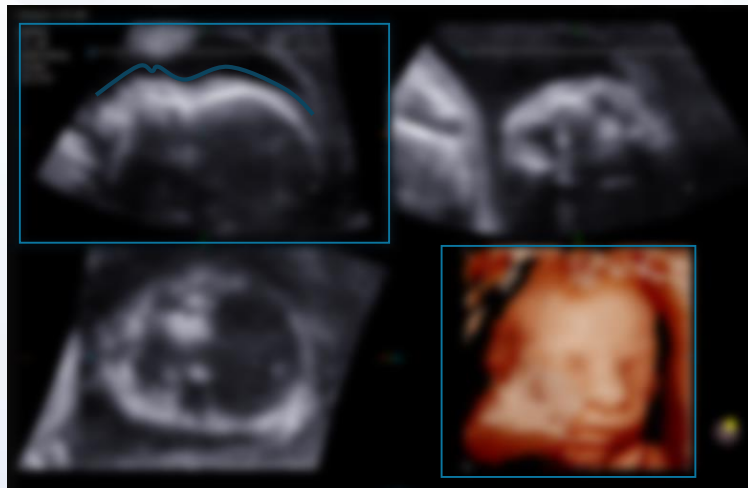
## Clinical Values

### Clinical Benefits

- FAD(Face Auto Detection) enables to eliminate unnecessary obstructive structures in front of fetal face in a single step.
- Supports to reduce a keystroke for manipulating volume data to demonstrate a fetal face.

## Tips & Tricks

1. FAD's main reference plane view is a Plane.
2. The system will detect a face boundary of a 4 plane view image.
3. Sight of obstetric face in front of face line is required. The region would be removed if some of obstetrics are partially obscured.
4. Reduce a noise intensity sensitive height to increase the FAD performance. Turn down a 3D Gain, increase a Thresh sensitive height.
5. Adjust a high resolution resolution.



## Disclaimer

---

- Before using the material, proceed the review of the local advertising regulation through your RA and legal team.
- The products, features, options, and transducers may not be commercially available in some countries.
- Sales and shipments are effective only after the approval by the regulatory affairs. Please contact your local sales representative for further details.