

# MV-Flow™ for Fetal Heart

Improving microvasculature sensitivity and  
enhance spatial comprehension for Fetal Heart assessment

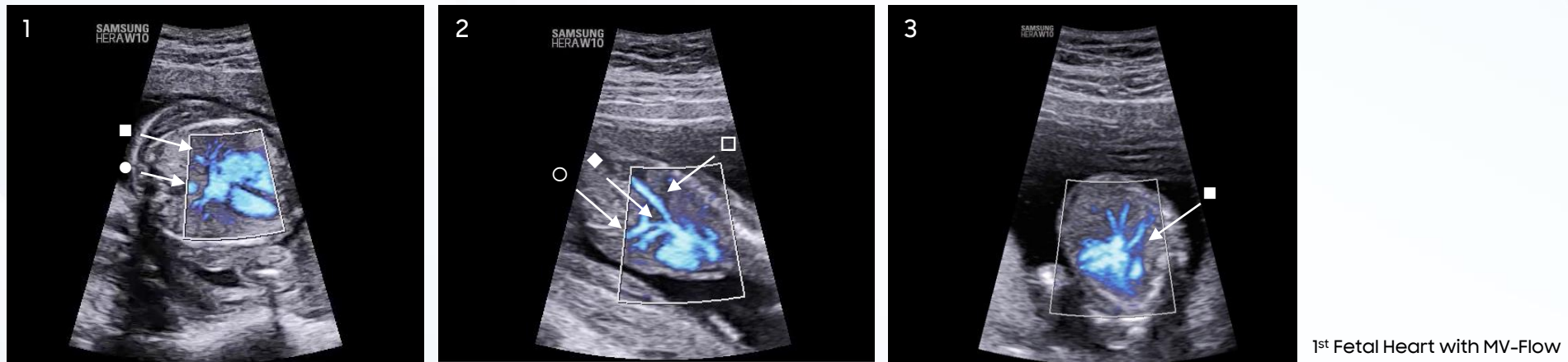
Tips & Tricks

## Clinical Values

### I Clinical Benefits

- May helpful to do more detailed Fetal Heart assessment by Imaging the slow vascular flow and small blood vessels of a Fetal Heart.
- Fetal cardiac anatomy structures such as atrium and ventricle shape, the great arteries, small branches can be accurately visualized.

### I Clinical Cases



1. Right and Left ventricle is demonstrated well with filled with color, separated by Interventricular septum. The aorta (●) and pulmonary vein(■) are also well demonstrated.
2. Ductus venosus(◆) begins from the portal sinus, where is the end of the umbilical vein(O) and meet the IVC(□, Inferior vena cava).
3. Detailed pulmonary vein's (■) return is clearly visualized in early gestation age with obvious cardiac chamber differentiation.

## Configuration

### Checklist

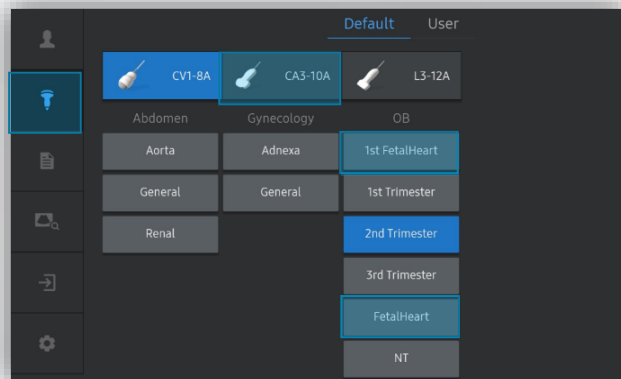
- System : HERA Series
- Options : MV-Flow
- Transducer/Application/Preset

## Tips & Ticks

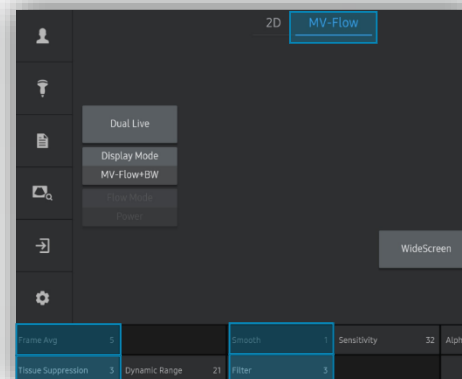
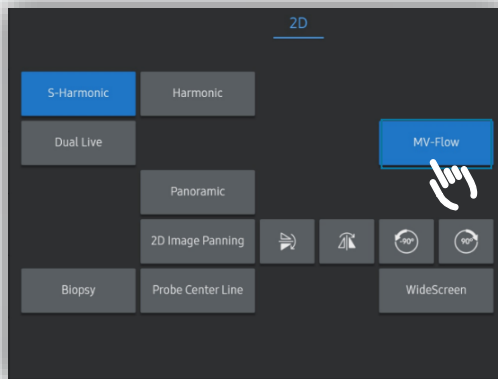
### 01. Create a Quick preset for a faster performance : MV-Flow™ for Fetal Heart

#### Reduce your keystroke and save your time

① Turn on the MV-Flow™ based off the 1<sup>st</sup> Fetal Heart/Fetal Heart preset.

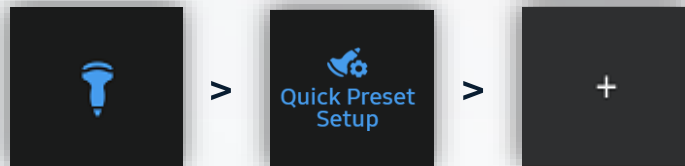
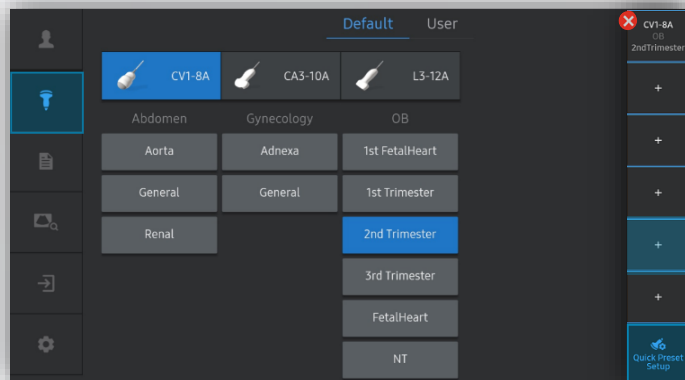


② Adjust image parameters on MV-Flow™ Mode.



Regarding image parameters, Please refer to the 3<sup>rd</sup> Page for more information.

③ Assign the created user preset as a Quick preset.

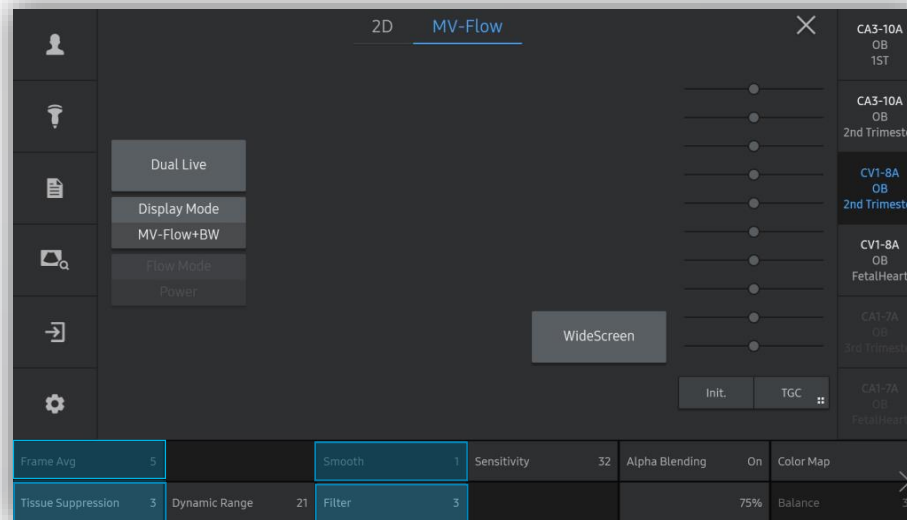


## 02. Create a shortcut key for quick assessment

- Shortcut key Assign : MV-Flow™ key on U/P Key  
→ You can directly turn on/off the MV-Flow through the **U/P key**.  
\* Utility > Setup > Customize > Assign "MV-Flow" on the U/P Key.

## 03. Adjust parameters to take a better image

- To take a better vessel visibility  
→ Increase a few steps of **Frame Average** (Frame Average 2-4)  
→ Increase a few steps of **Frame Average** (Frame Average 2-4)
- To take a better color filling by smoothing a vessel segment edge  
→ Turn up a few steps of **Smooth** (1-3)
- To eliminate a noise from a strong ultrasonic structure  
→ Increase a few steps of **Tissue Suppression** (Tissue 0-4)
- To reduce a flow artifact  
→ Turn up a few steps of **Flow** (Flow 0-4)



## Disclaimer

---

- Before using the material, proceed the review of the local advertising regulation through your RA and legal team.
- The products, features, options, and transducers may not be commercially available in some countries.
- Sales and shipments are effective only after the approval by the regulatory affairs. Please contact your local sales representative for further details.