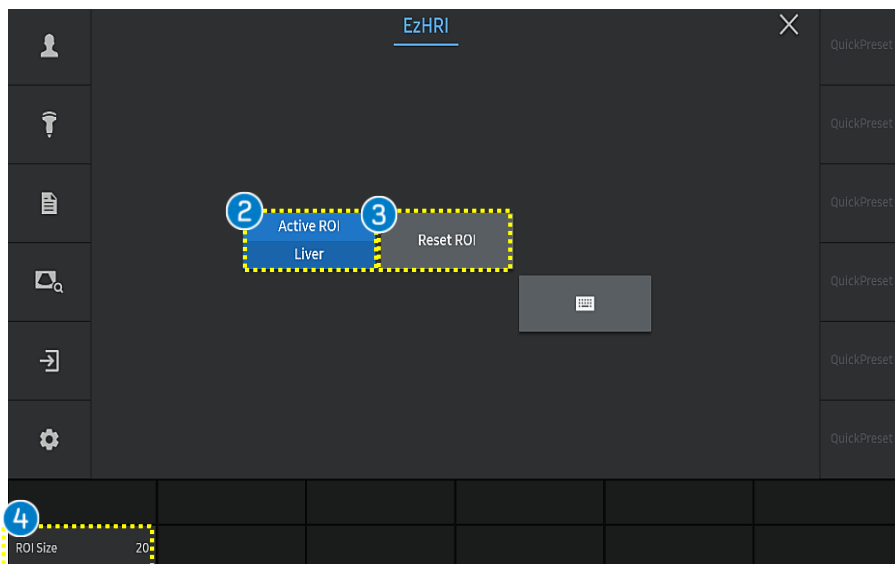
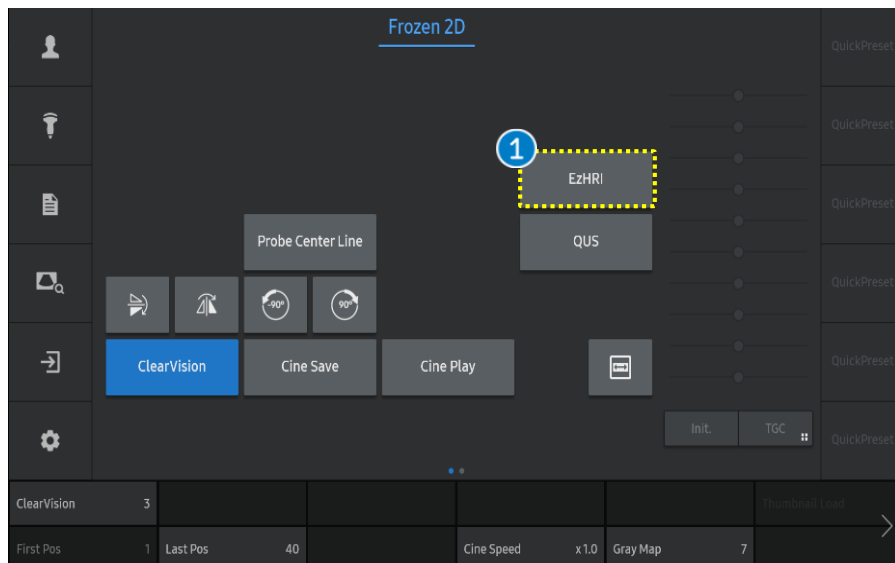


SAMSUNG

EZHRI™

RS85 Prestige Quick Guide

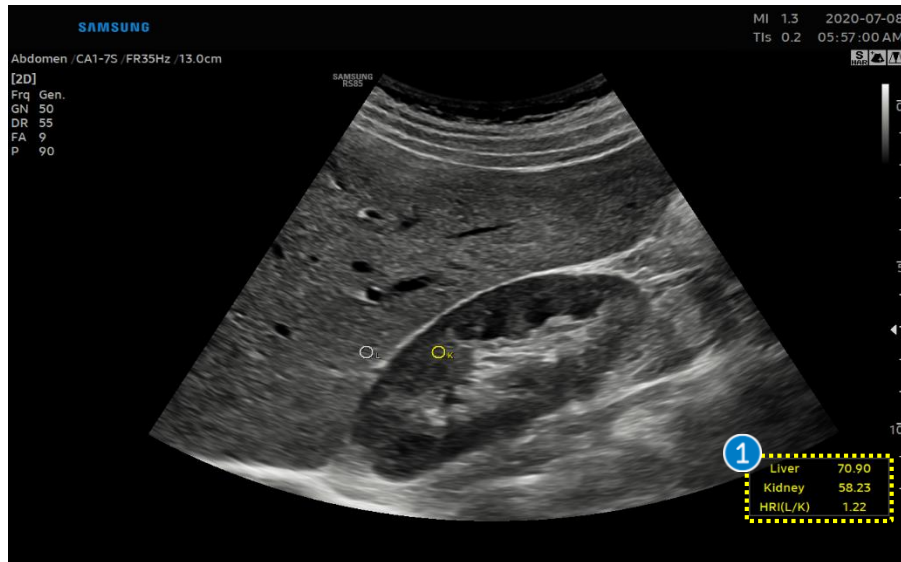




Acquire longitudinal hepato renal view of kidney and liver at the same screen.

Try to avoid shadowing and motion artifacts during the scanning.

- | | |
|--------------|---|
| 1 EzHRI | Activate the [EzHRI] on frozen 2D mode. |
| 2 Active ROI | To change ROI position and size, choose the desired ROI using the [Active ROI] button or The [Change] key. |
| 3 Reset ROI | Tap the [Reset ROI] button on the touch screen. Then all ROI will be restored initial position. |
| 4 ROI Size | It could change ROI size. |
| 5 Set | Confirm the result value by pressing the [Set]button on the control panel. Then, the result value is saved and assigned to the report. |



Ultrasound Report

| Name | ID | 2020-01-17-0001 | Exam. Date | 2020-01-17 | |
|-------------|-------------------------|-----------------|----------------|------------|-------|
| [Abdomen] | | | | | |
| EzHRI | 1 | 2 | 3 | 4 | 5 |
| Liver | 32.43 | 26.61 | 35.64 | 18.18 | 30.61 |
| Kidney | 25.48 | 29.08 | 24.87 | 15.83 | 27.40 |
| HRI (L/K) | 1.27 | 0.92 | 1.43 | 1.15 | 1.12 |
| TAI | Avg. 0.66 Median 0.67 | | | | |
| ROI | Value (dB/cm/MHz) | | R ² | | |
| 1 | 0.67 | | 0.84 | | |
| 2 | 0.69 | | 0.86 | | |
| 3 | 0.64 | | 0.84 | | |
| 4 | 0.68 | | 0.77 | | |
| 5 | 0.61 | | 0.71 | | |
| TSI | Avg. 92.86 Median 91.68 | | | | |
| ROI | Value | | | | |
| 1 | 95.26 | | | | |
| 2 | 90.47 | | | | |
| 3 | 91.68 | | | | |
| 4 | 91.16 | | | | |
| 5 | 95.71 | | | | |

The result

| | |
|----------|-------|
| Liver | 82.53 |
| Kidney | 32.14 |
| HRI(L/K) | 2.57 |

1 Result

| | |
|-----------|---|
| Liver | The mean brightness level within the ROI on Liver |
| Kidney | The mean brightness level within the ROI on Kidney |
| HRI (L/K) | The ratio of the mean brightness levels of the liver and renal parenchyma HRI (Hepato renal index) = mean brightness of liver / mean brightness of kidney |

2 Report

Select [Report] button on the touch screen and the result value is saved on the report.

SAMSUNG

- The features, options may not be commercially available in some countries.
- Sales and shipments are effective only after the approval by the regulatory affairs. Please contact your local sales representative for further details.
- This Quick guide does not include all of the details of instruction, for more detail, please refer to RS85 User Manual.
- Do not distribute this document to customers unless relevant regulatory and legal affairs officers approve such distribution.
- This User Quick Guide is based on RS85 V2.08.
- Disclaimer: Some Images in this content were obtained from other system.

SAMSUNG MEDISON CO., LTD.

© 2024 Samsung Medison All Rights Reserved.

Samsung Medison reserves the right to modify the design, packaging, specifications, and features shown herein, without prior notice or obligation.