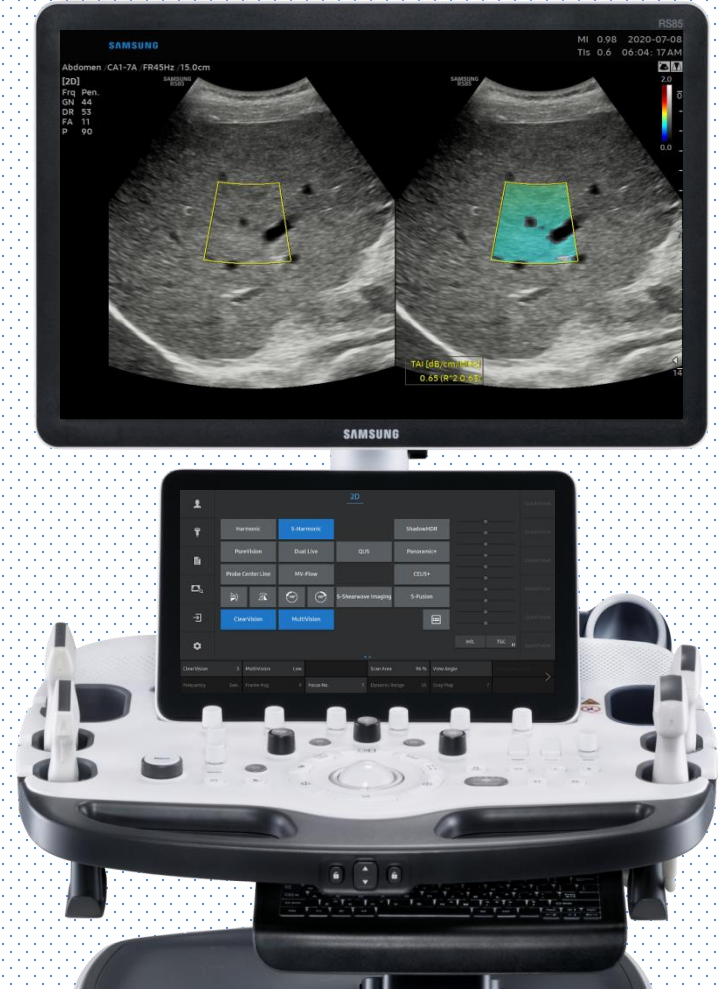
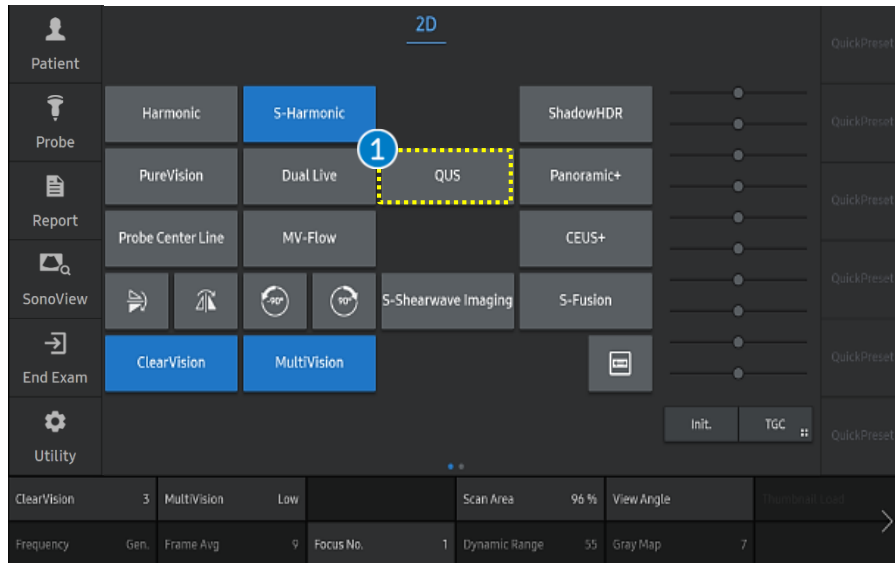


TAI™ (Tissue Attenuation Imaging) RS85 Prestige Quick Guide



1. Start QUS



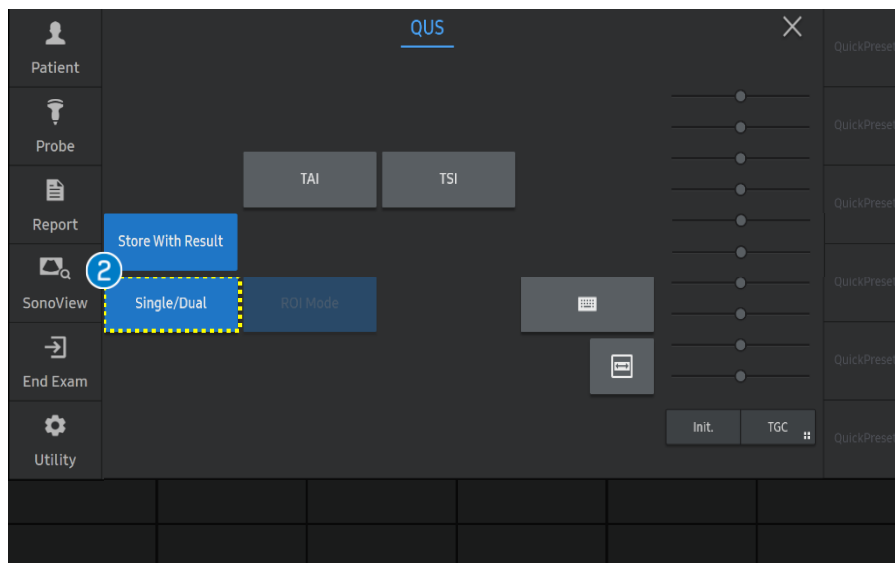
Acquire liver parenchyma without vessel and reverberation artifact. B-mode image is placed in the right lobe of the liver at the intercostal space while the patient held his or her breath.

① QUS

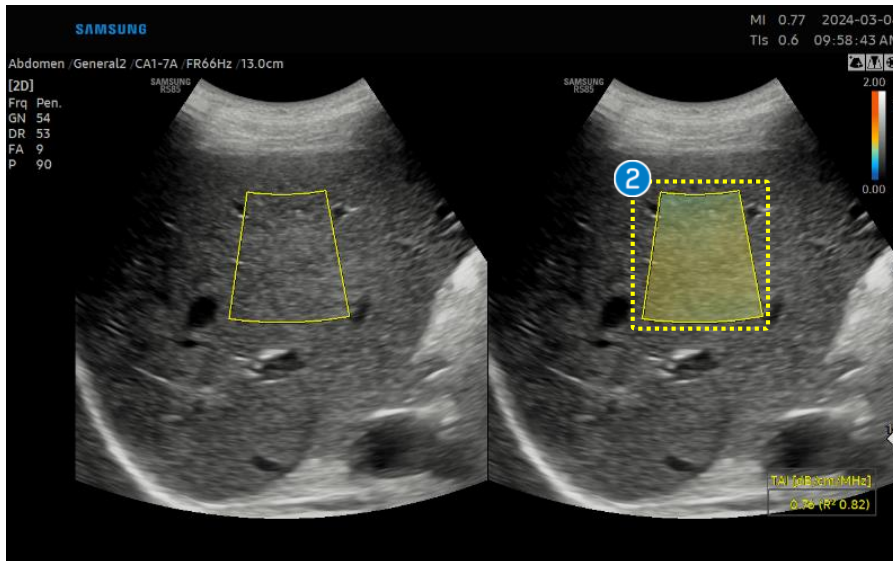
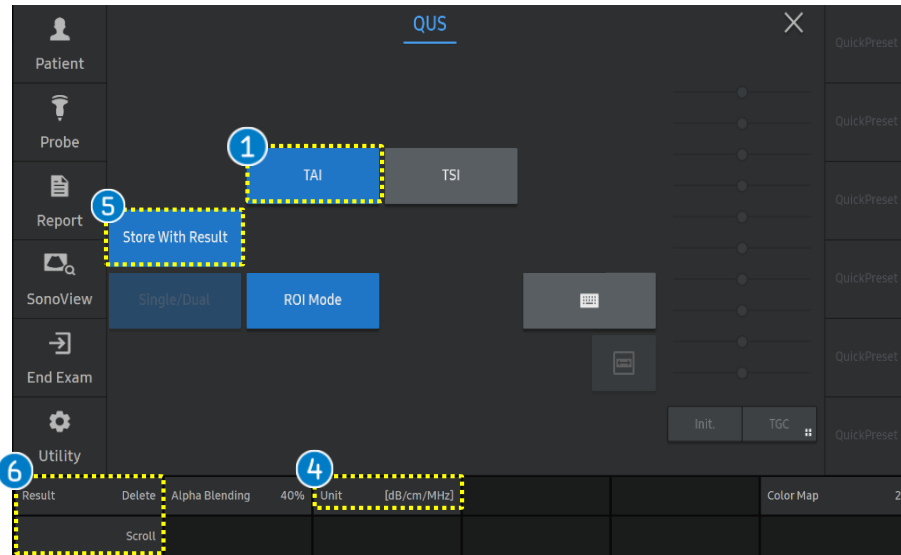
Tab the [QUS] on the touch screen to start.

② Single/Dual

You can select the [Single/Dual] depends on your preference.

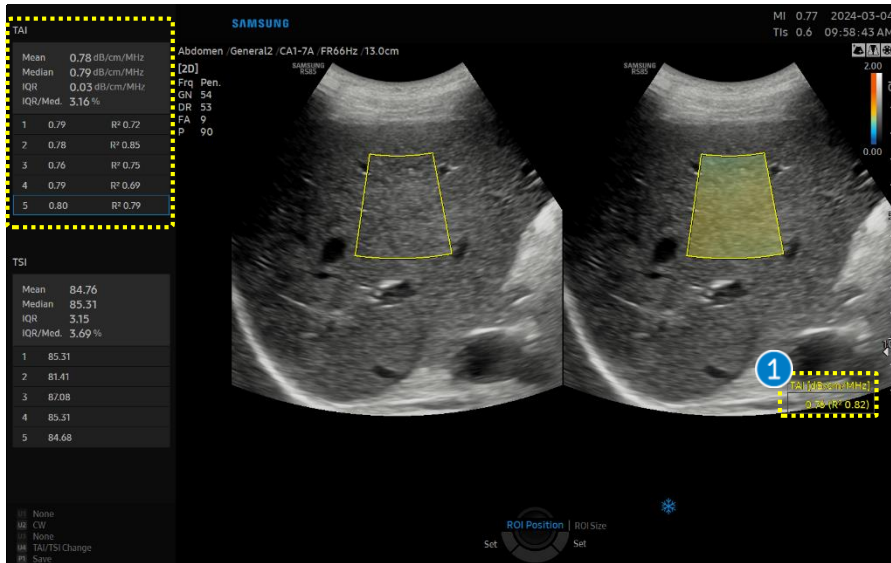


2. Activate TAI™



1 TAI	Activate the [TAI] function.
2 ROI Position	The ROI box is placed in a relatively homogenous region of the right lobe of the liver at least 2cm below the liver capsule, while avoiding areas with focal fat sparing or deposition and large vessels.
3 Set	Press the [Set] button on the control panel to confirm the result, the result value is displayed on the screen.
4 Unit	Available to change the unit 'dB/m' or 'dB/cm/MHz'.
5 Store With Result	Saves the image including the measurement results area.
6 Delete Result / Scroll Result	Scroll the results and delete the specific result which is selected.

3. The result of TAI™



1 Result

- TAI™ (Tissue attenuation imaging) provides quantitative measurement of attenuation coefficients of tissues.
 - R² (Measurement quality)
 - Higher value (R² > 0.6) indicates reliable result.
 - R² < 0.6 (Unreliable result)
- The Results in red color is recommended to avoid region.

**TAI [dB/cm/MHz]
0.75 (R² 0.57)**

2 Report

Select [Report] button on the touch screen and the result value is saved on the report. You can check the mean and median value of consecutive measurements.

Ultrasound Report

Name	ID	SAMSUNG	Exam. Date	2020-06-25
------	----	---------	------------	------------

2 [Abdomen]

TAI

ROI	Mean	Median	R ²
	Value (dB/cm/MHz)	2.00	
1	2.00	2.00	0.63
2	2.00	2.00	0.61
3	2.00	2.00	0.61
4	2.00	2.00	0.70
5	2.00	2.00	0.82

- The features, options may not be commercially available in some countries.
- Sales and shipments are effective only after the approval by the regulatory affairs. Please contact your local sales representative for further details.
- This Quick guide does not include all of the details of instruction, for more detail, please refer to RS85 User Manual.
- Do not distribute this document to customers unless relevant regulatory and legal affairs officers approve such distribution.
- This User Quick Guide is based on RS85 V2.08.01
- Disclaimer: Some Images in this content were obtained from other system.

SAMSUNG MEDISON CO., LTD.

© 2024 Samsung Medison All Rights Reserved.

Samsung Medison reserves the right to modify the design, packaging, specifications, and features shown herein, without prior notice or obligation.