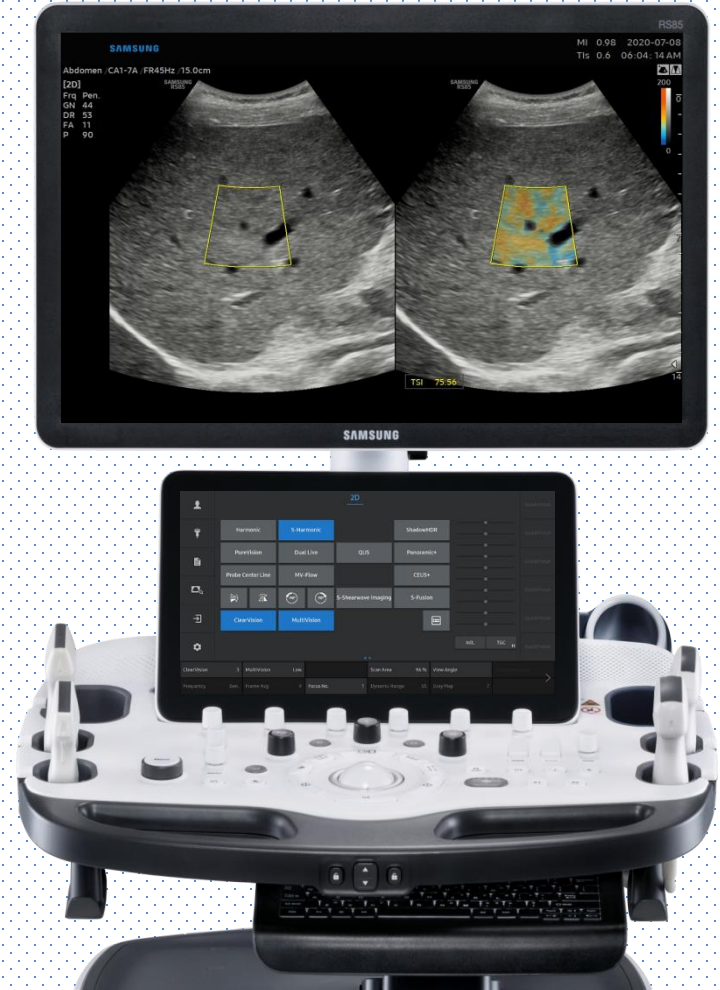


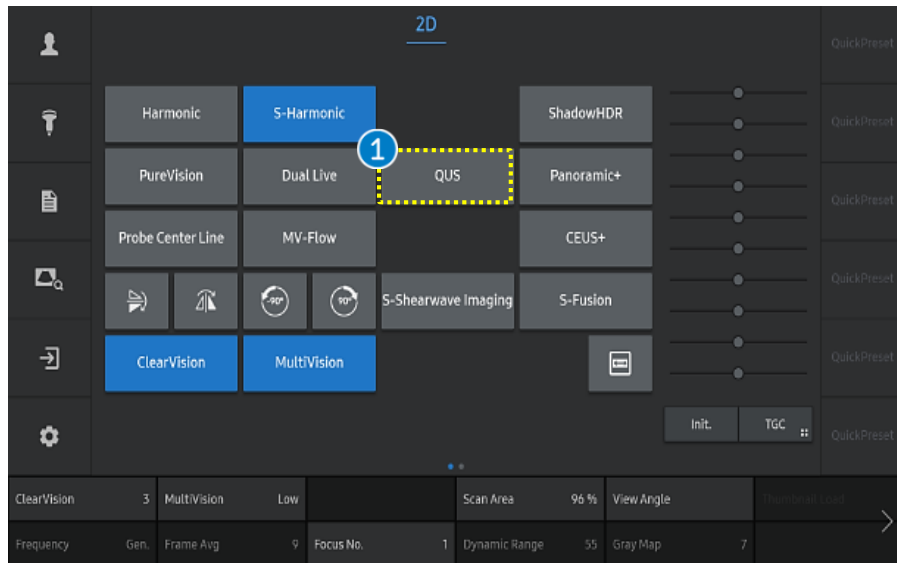
## TSI™

(Tissue Scatter distribution Imaging)

### RS85 Prestige Quick Guide



# 1. Start QUS



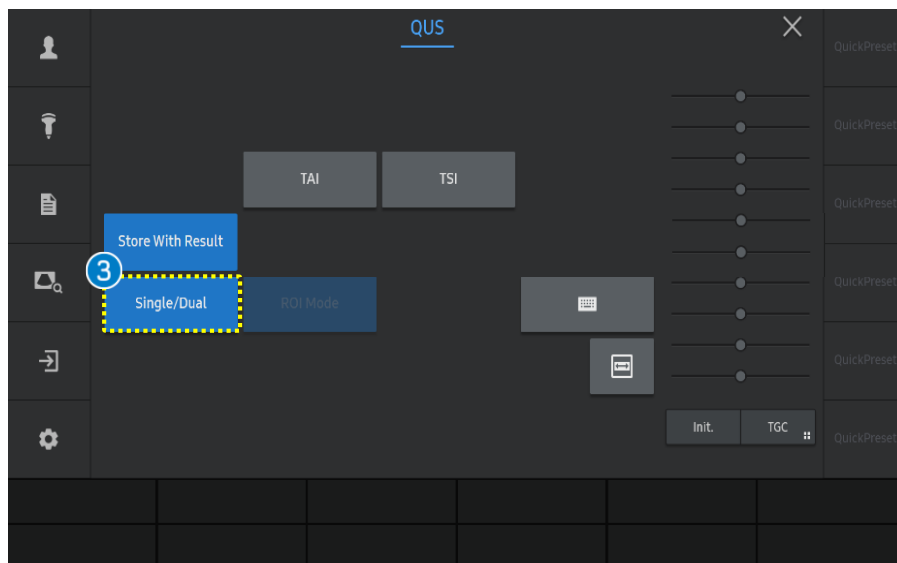
Acquire liver parenchyma without vessel and reverberation artifact. B-mode image is placed in the right lobe of the liver at the intercostal space while the patient held his or her breath.

① QUS

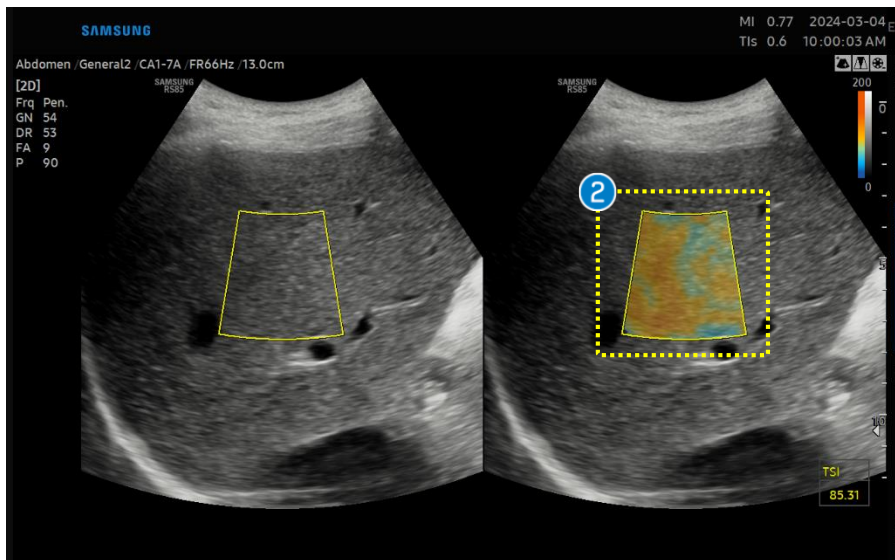
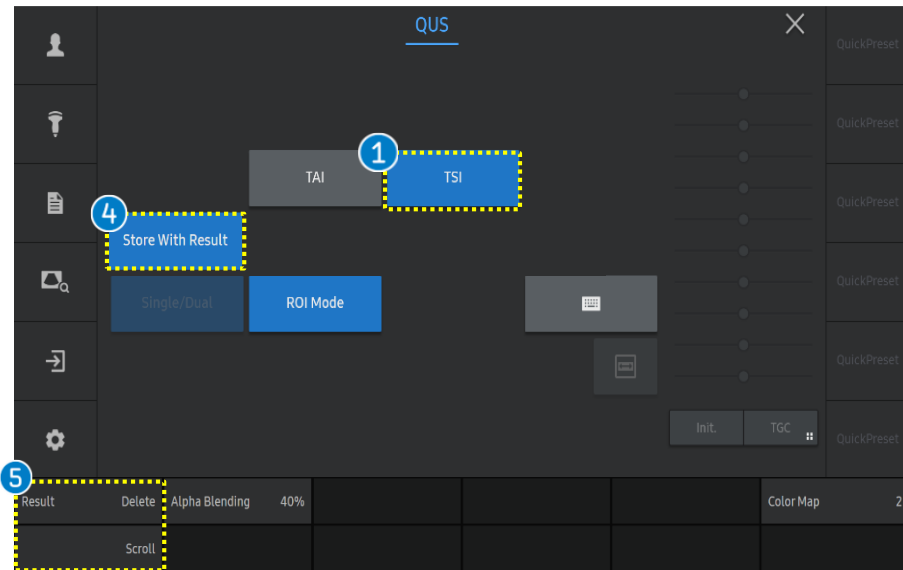
Tab the [QUS] on the touch screen to start.

② Single/Dual

You can select the [Single/Dual] depends on your preference.

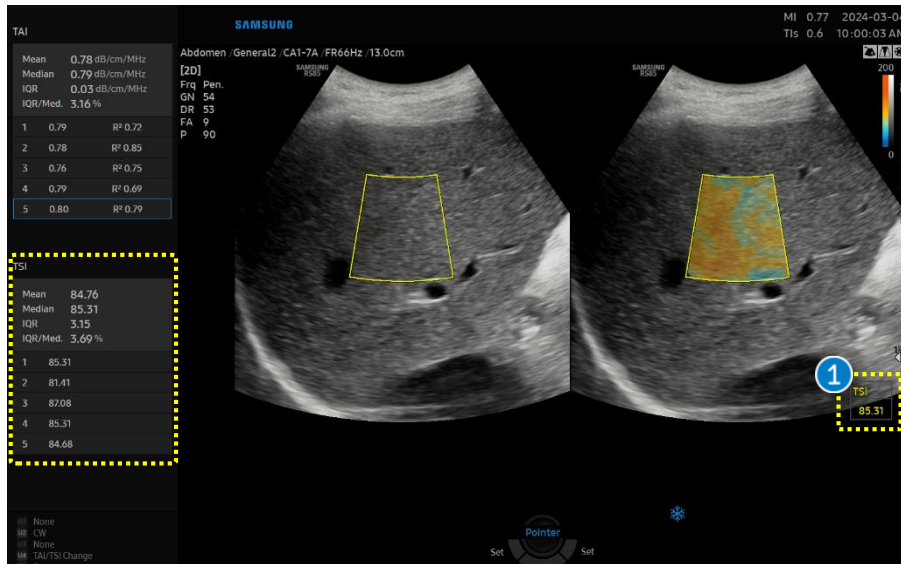


## 2. Activate TSI™



1 TSI	Activate the [TSI] function.
2 ROI Position	The ROI box is placed in a relatively homogenous region of the right lobe of the liver at least 2cm below the liver capsule, while avoiding areas with focal fat sparing or deposition and large vessels.
3 Set	Press the [Set] button on the control panel to confirm the result, the result value is displayed on the screen.
4 Store With Result	Saves the image including the measurement results area.
5 Delete Result /Scroll Result	Scroll the results and delete the specific result which is selected.

# 3. The result of TSI™



## 1 Result

TSI™ provides quantitative measurement of scattering coefficients of tissues.

## 2 Report

Select the [Report] button on the touch screen and the result value is saved on the report.

You can check the mean and median value of consecutive measurements.

The screenshot shows the 'Ultrasound Report' interface. At the top, it displays patient information: Name, ID, SAMSUNG, Exam. Date, and 2020-06-26. Below this, there is a section for '[Abdomen]' with a blue circle and the number '2' next to it. A yellow dashed box highlights a table of TSI measurements. The table has two columns: 'Mean' and 'Median', both with a value of 100.55. Below this, there is a table with two columns: 'ROI' and 'Value'. The 'Value' column contains five entries, all of which are 100.55.

Ultrasound Report				
Name	ID	SAMSUNG	Exam. Date	2020-06-26
[Abdomen]				
TSI		Mean 100.55	Median 100.55	
ROI	Value			
1	100.55			
2	100.55			
3	100.55			
4	100.55			
5	100.55			

- The features, options may not be commercially available in some countries.
- Sales and shipments are effective only after the approval by the regulatory affairs. Please contact your local sales representative for further details.
- This Quick guide does not include all of the details of instruction, for more detail, please refer to RS85 User Manual.
- Do not distribute this document to customers unless relevant regulatory and legal affairs officers approve such distribution.
- This User Quick Guide is based on RS85 V2.08.01
- Disclaimer: Some Images in this content were obtained from other system.

**SAMSUNG MEDISON CO., LTD.**

© 2024 Samsung Medison All Rights Reserved.

Samsung Medison reserves the right to modify the design, packaging, specifications, and features shown herein, without prior notice or obligation.