

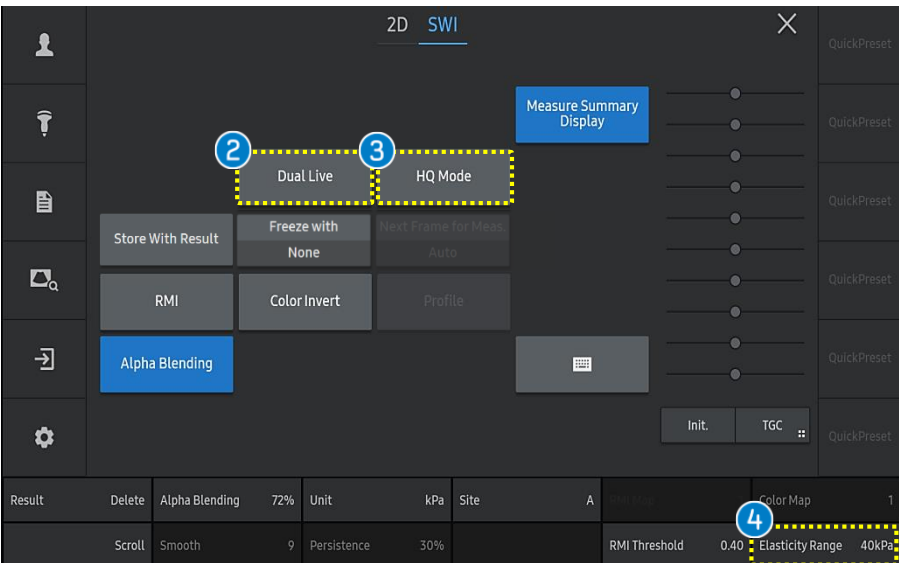
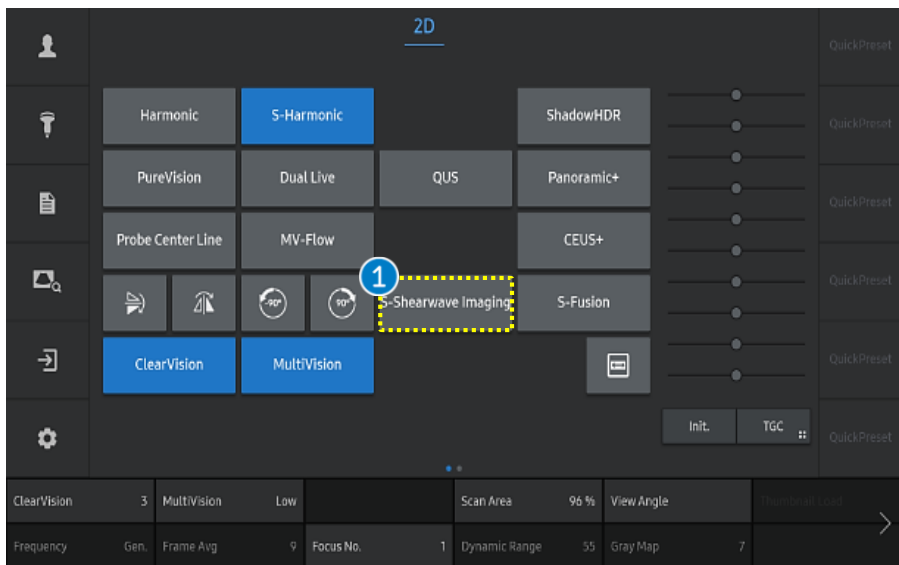
# S-Shearwave Imaging™

## RS85 Prestige User Quick Guide

for MSK



# 1. Start S-Shearwave Imaging™



- 1 S-Sherawave Imaging**

Tap the [S-Shearwave Imaging] on the touch screen to start.
- 2 Dual Live**

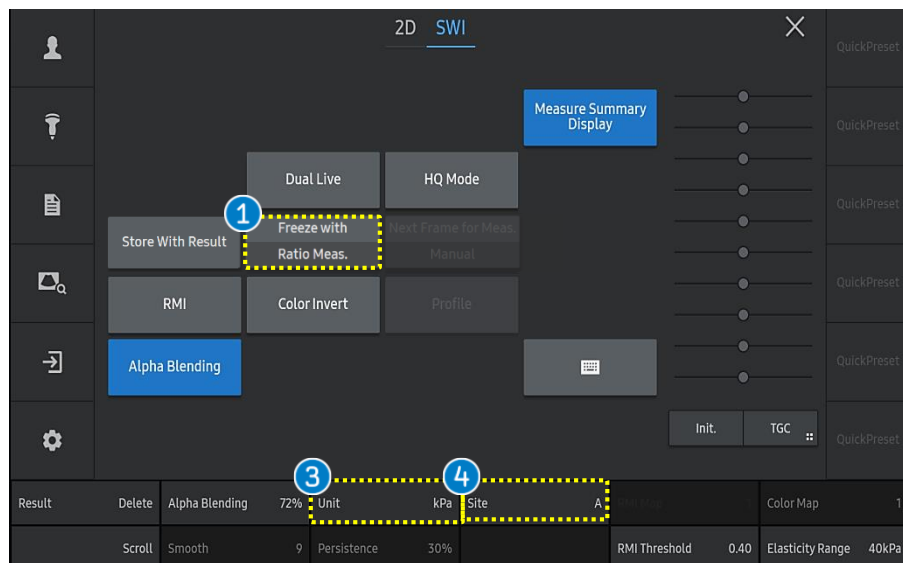
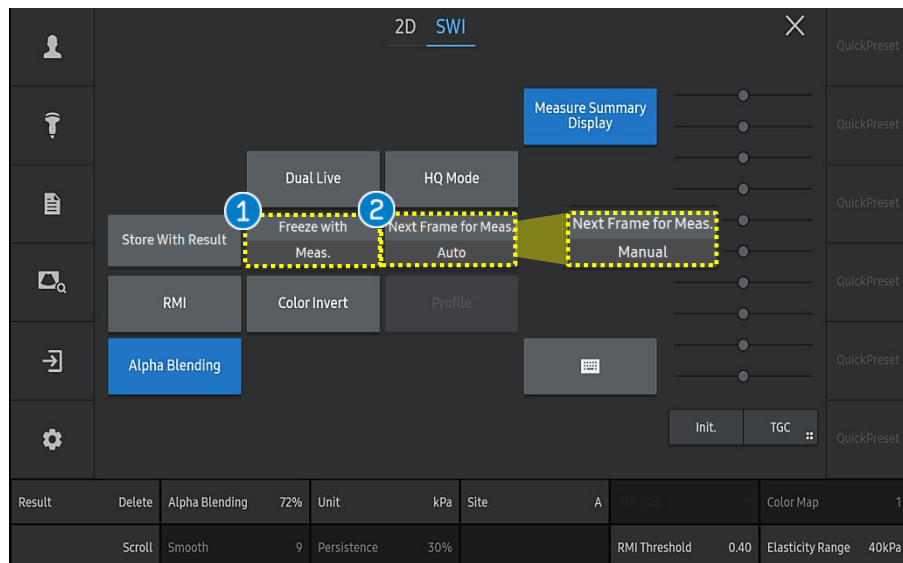
It displays both stiffness map and RMI map or 2D images in real time.

[RMI map] [Stiffness map]
- 3 HQ Mode**

With this [HQ Mode], it provides high resolution image.
- 4 Elasticity Range**

It is to change the color stiffness map range. If you change the [Elasticity Range], color map within ROI and the color of elasticity bar also will be changed accordingly.

## 2. Measure the Elasticity (1)

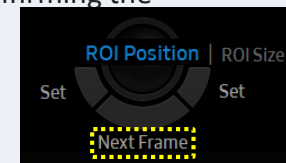


### 1 Freeze with Meas./ Ratio Meas.

Starts Elasticity Measurement/Elasticity Ratio Measure when pressing Freeze.

### 2 Next Frame for Meas.

- Auto: Automatically moves to the next frame after confirming the measurement by pressing [Set] button.
- Manual: Moves to the next frame by pressing [Next Frame] after confirming the measurement.



### 3 Unit

- It is to change the unit of an elasticity value.
- The unit [kPa] is based on Young's modulus.
  - The unit [m/s] is for Shearwave speed.

### 4 Site

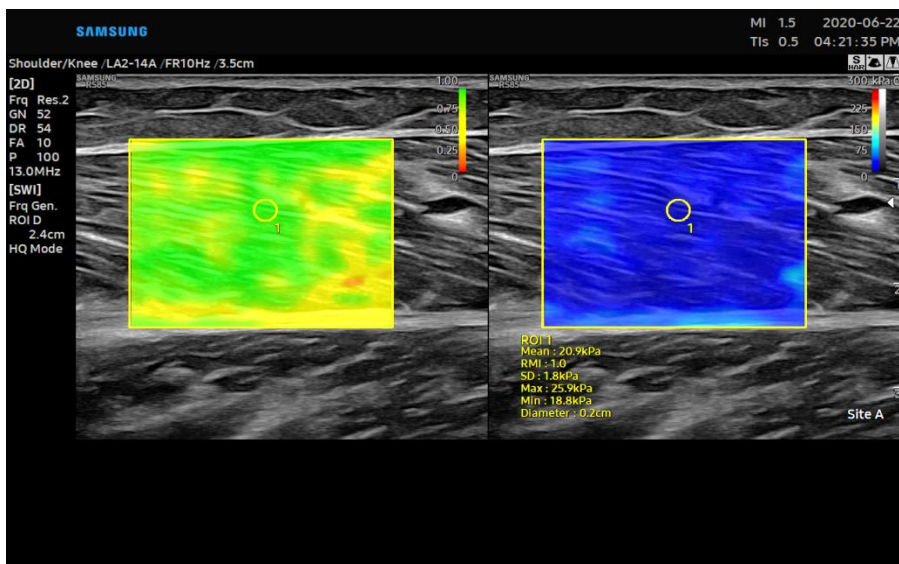
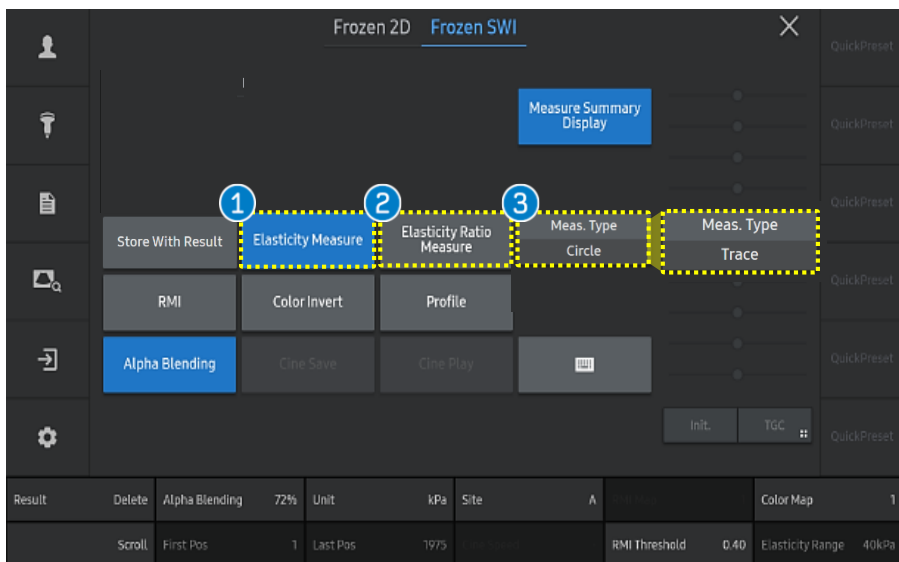
It is to change the ROI site.

### Notes

The Next Frame direction can be selected between Forwards or Backwards in the Setup page.

\*Setup (Imaging ► Features ► S-Shearwave Imaging ► Next Frame Direction ► **Forward / Backward**)

## 2. Measure the Elasticity (2)



[Elasticity Measure]

### 1 Elasticity Measure

Tap the [Elasticity Measure] button.

- You can adjust ROI size using change key.
- Press the [Set] button to save the value.
- When moving the trackball, it copies additional ROI for next measurement.

### 2 Elasticity Ratio Measure

Tap the [Elasticity Ratio Measure] button.

- Place the first quantification ROI on the **area of interest** within the elasticity ROI and press the [Set] button.
- Place the second quantification ROI on the **reference** area within the elasticity ROI and press the [Set] button.

### 3 Meas. Type

Select the measurement of ROI type between **Circle** or **Trace** type.

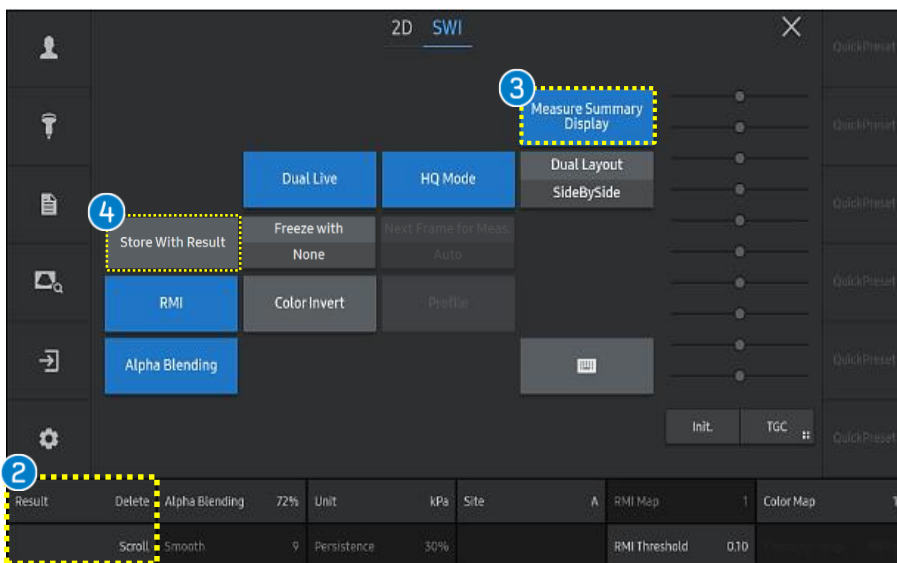
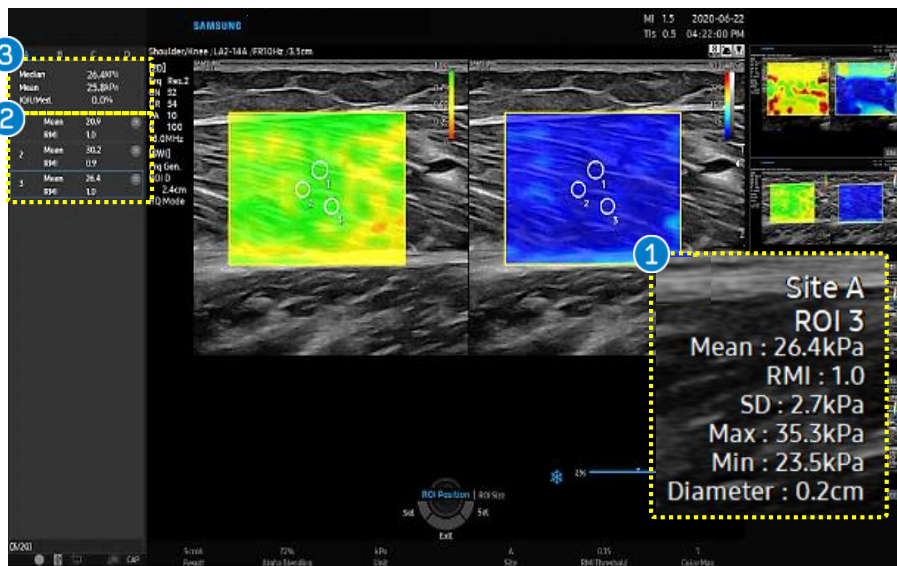
### Notes

If Next Frame for Meas. is used, the location of the measurement ROI to the next frame can be set in the Setup page.

\*Setup (Imaging ▶ Features ▶ S-Shearwave Imaging ▶ Next

Measurement Cursor Display Position ▶ **Center of ROI / Keep Last Position**)

# 3. The results




## 1 Result box

The stiffness results within quantification ROI are displayed.

<b>Mean</b>	Mean elasticity value in ROI
<b>SD</b>	Standard deviation in ROI
<b>Min</b>	Minimum elasticity value in ROI
<b>Max</b>	Maximum elasticity value in ROI
<b>Diameter</b>	Diameter of ROI box

## 2 Stiffness Result

- Available to view the measured results.
- It can scroll the result using [Scroll] button. If you want to delete the result individually by pressing the [Delete] button or selecting  icon.

## 3 Measure Summary Display

Available to select the measure summary (Median, Mean, IQR, IQR/Med value) to be displayed on the result or not.

## 4 Store with Result

Saves the image including the measurement results area.

- The features, options may not be commercially available in some countries.
- Sales and shipments are effective only after the approval by the regulatory affairs. Please contact your local sales representative for further details.
- This Quick guide does not include all of the details of instruction, for more detail, please refer to RS85 User Manual.
- Do not distribute this document to customers unless relevant regulatory and legal affairs officers approve such distribution.
- This User Quick Guide is based on RS85 V2.08.01
- Disclaimer: Some Images in this content were obtained from other system.

**SAMSUNG MEDISON CO., LTD.**

© 2024 Samsung Medison All Rights Reserved.

Samsung Medison reserves the right to modify the design, packaging, specifications, and features shown herein, without prior notice or obligation.