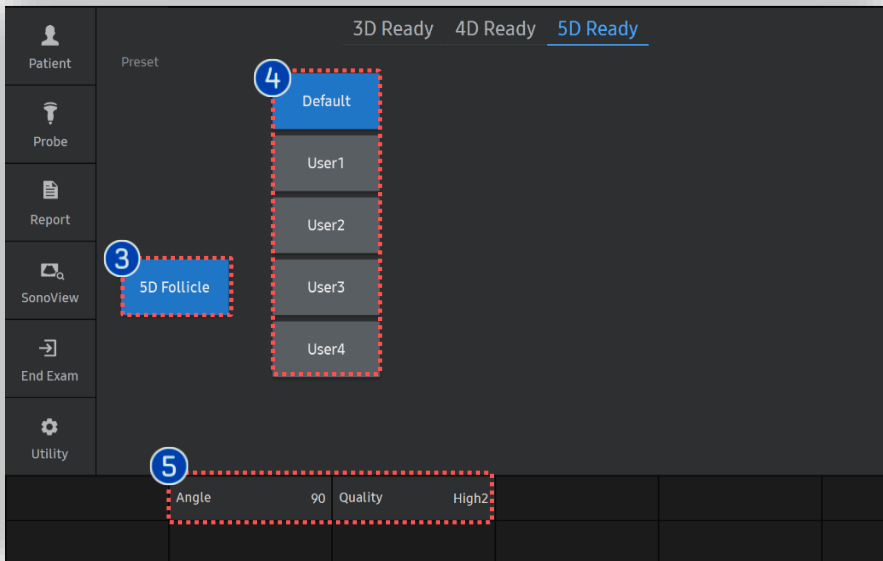
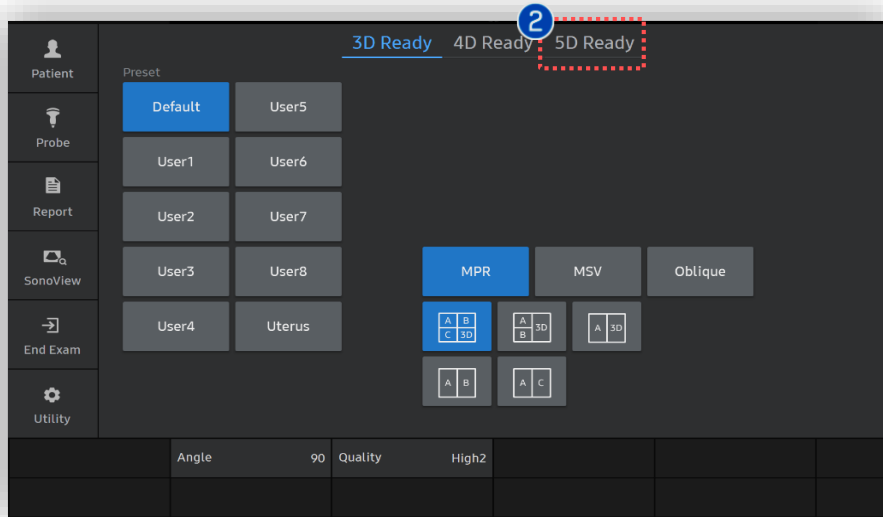
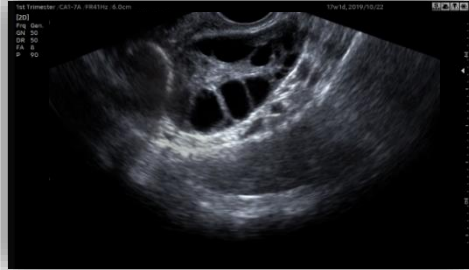


5D Follicle™ V Series Quick Guide



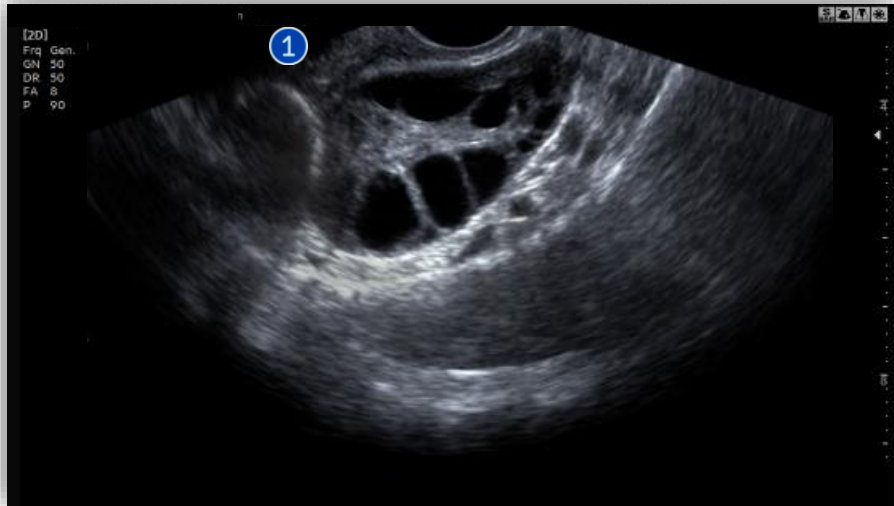
1. Activate 5D Follicle™ (Before 3D Acquisition)



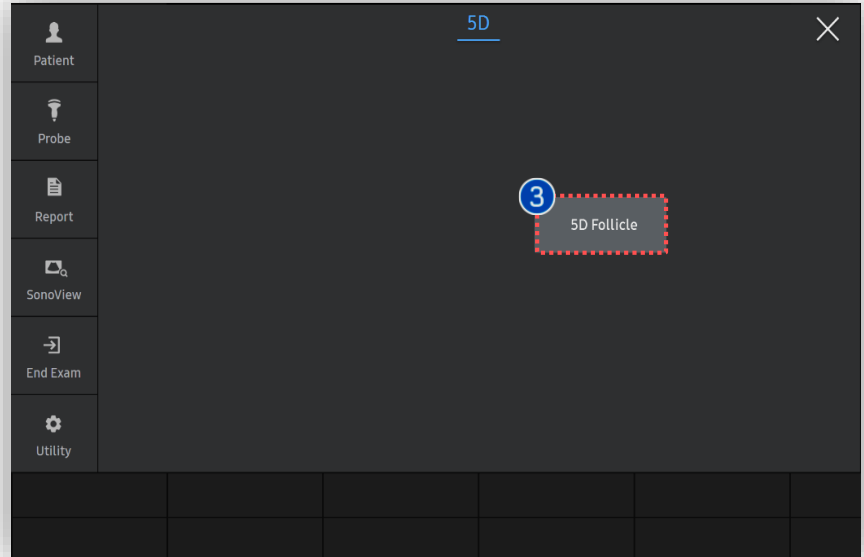
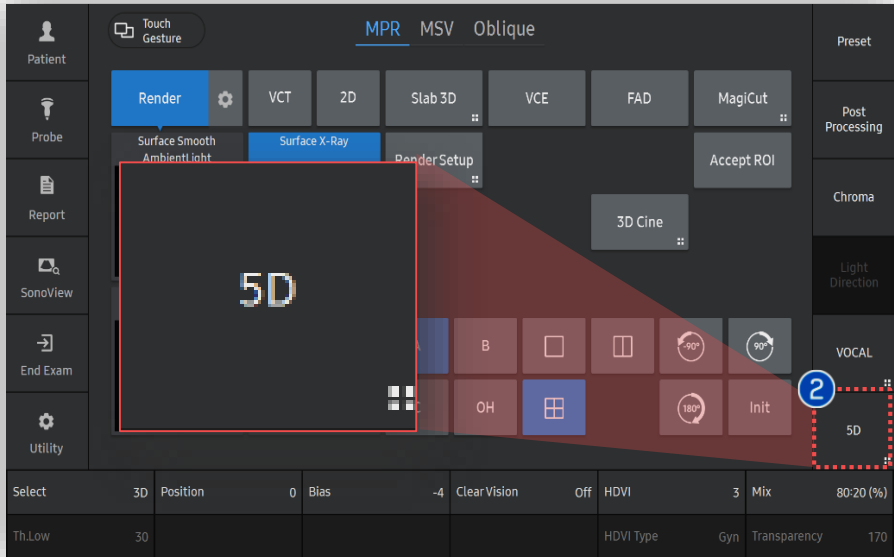
<p>1 3D Button</p>	<p>Press 3D button on the control panel.</p>
<p>2 5D Ready</p>	<p>Tap 5D Ready on the touch screen.</p>
<p>3 5D Follicle</p>	<p>Tap 5D Follicle to activate 5D Follicle™.</p>
<p>4 Preset</p>	<p>Select preferred preset between default and users. Each 5D feature could have own preset parameters.</p>
<p>5 Parameters</p>	<p>3D scan angle and quality are customizable.</p>
<p>6 Volume acquisition</p>	<p>Find follicles that you wish to obtain 5D Follicle™ and zoom up to fit on your monitor as much as possible.</p> 

5D Follicle™

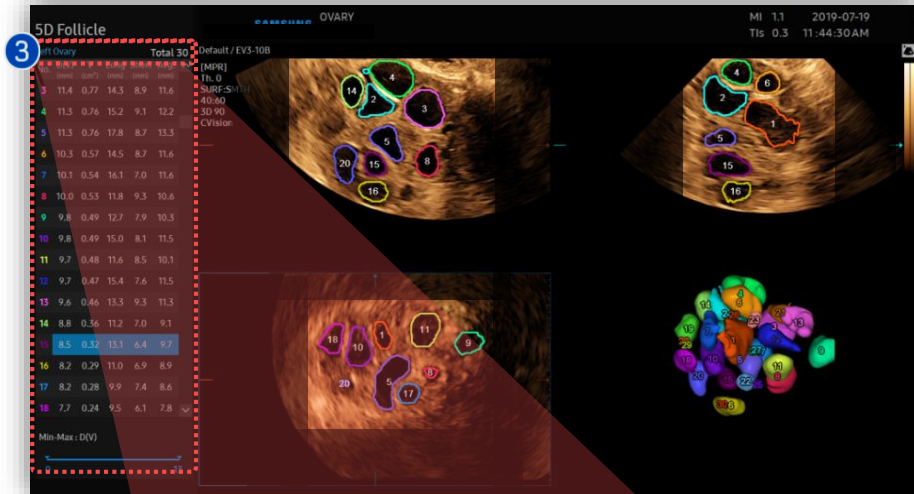
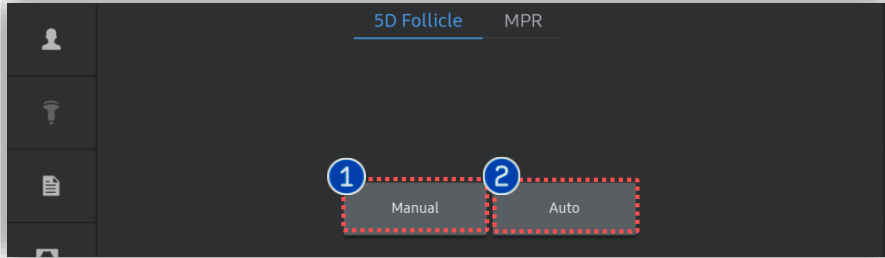
2. Activate 5D Follicle™ (After 3D Acquisition)



1 3D Acquisition	If 3D image acquisition is already done by 3D button
2 5D	Tab to activate 5D features and select Follicle.
3 5D Follicle	Tab 5D Follicle to activate the feature.



3. Data acquisition and result



Left Ovary		Total 16			
No.	D(V) (mm)	V (cm ³)	Long (mm)	Short (mm)	Avg. (mm)
▲					

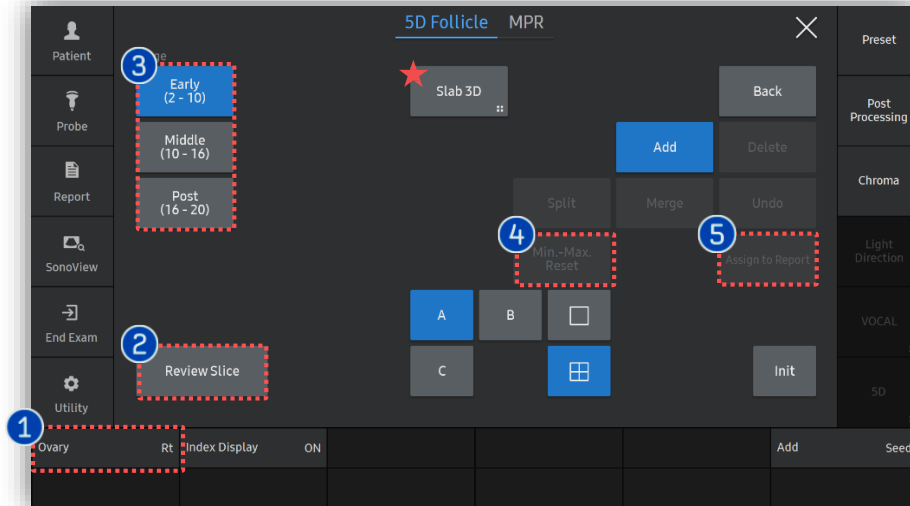
1 Manual
Analysis follicles location and measurement manually.

2 Auto
Analysis follicles location and measurement automatically.

3 Result
After follicle detection, its result is shown on the left. The follicles are color-coded and numbered on 3D rendered image. And varies results are listed up in the result table in order to size of follicles.

D(V) (mm)	Follicle diameter assumed as a perfect sphere
V (cm³)	Follicle volume calculated by voxel
Long/Short axis (mm)	Diameters of an ellipsoid model
Avg. (mm)	Average diameter of the long and short axis

4. Result review and edit (1)

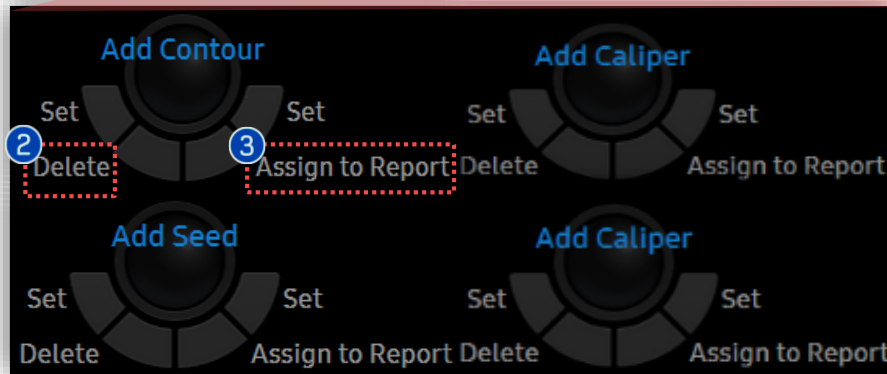
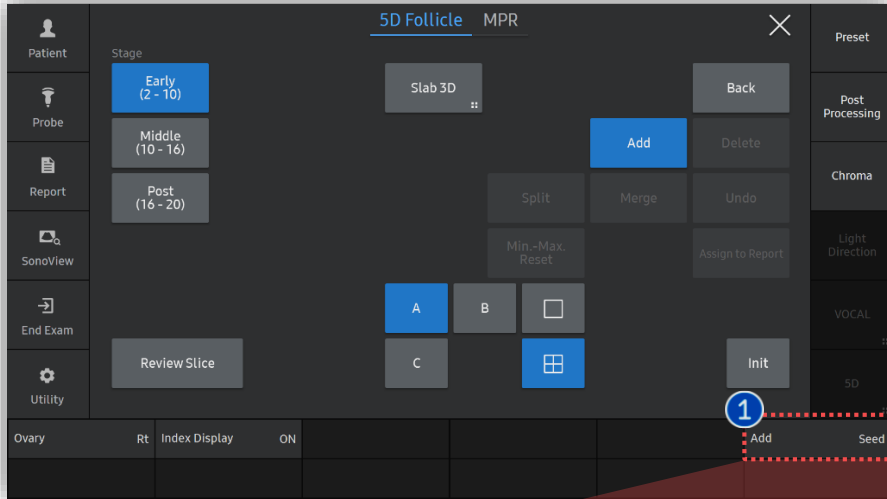


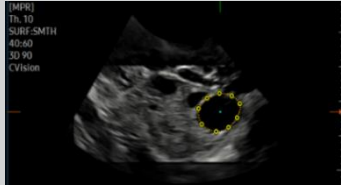
1 Ovary	Select side of follicle between [Lt] and [Rt].
2 Review Slice	After plane selection, review the images in multiple slices to search for follicles that has not been found yet.
3 Stage	Specify the stages that you would like to show in the image and the results table.
4 Min. - Max. Reset	Reset the follicle range.
5 Assign to Report	Tap to send the measurement results to the report.

★Tips

Slices of a 3D image will be displayed as images rendered in 3D. You may select [Slab 3D Type] among Surface, X-ray, Max and Min.

5. Result review and edit (2)



<p>① Add</p>	<p>A measurement target will be added based on the seed position entered by the user. You can use this when you find a follicle that has not previously been detected.</p> <p>A measurement target will be added based on the Contour / Seed / Caliper / Ellipse entered by the user.</p> <p>* e.g. Contour method</p> 
<p>② Delete</p>	<p>Press [Delete] and [Set] on the follicle you wish to delete.</p>
<p>③ Assign to Report</p>	<p>Press [Assign to Report] to send newly detected follicle's result to the report.</p>

★Tips
 Manual navigation is available by using [X], [Y], [Z] and [Ref. Slice] for find of proper plane to add additional follicles.

- The features, options may not be commercially available in some countries.
- Sales and shipments are effective only after the approval by the regulatory affairs. Please contact your local sales representative for further details.
- This Quick guide does not include all of the details of instruction, for more detail, please refer to V series User Manual.
- Do not distribute this document to customers unless relevant regulatory and legal affairs officers approve such distribution.
- This User Quick Guide is based on V series V1.05.
- Disclaimer: Some Images in this content were obtained from other system.

SAMSUNG MEDISON CO., LTD.

© 2024 Samsung Medison All Rights Reserved.

Samsung Medison reserves the right to modify the design, packaging, specifications, and features shown herein, without prior notice or obligation.