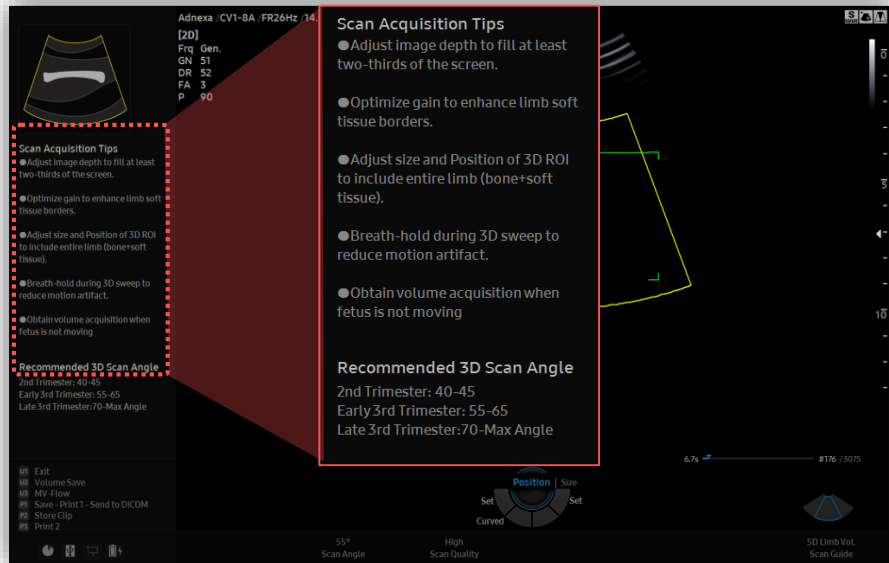
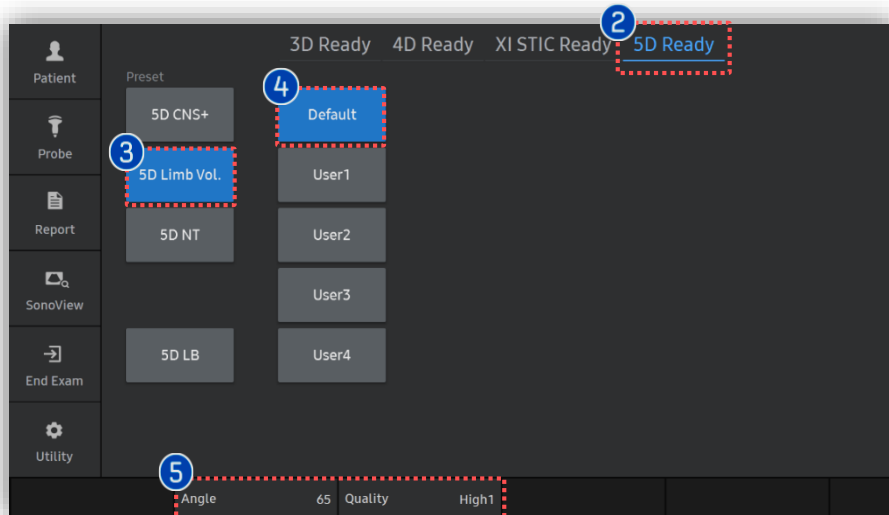


5D Limb Vol™

V Series Quick Guide

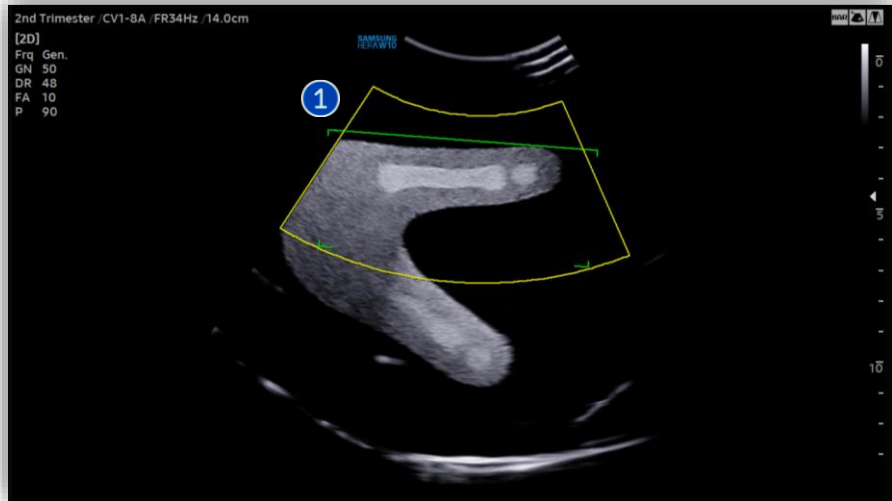


1. Activate 5D Limb Vol.™ (Before 3D Acquisition)

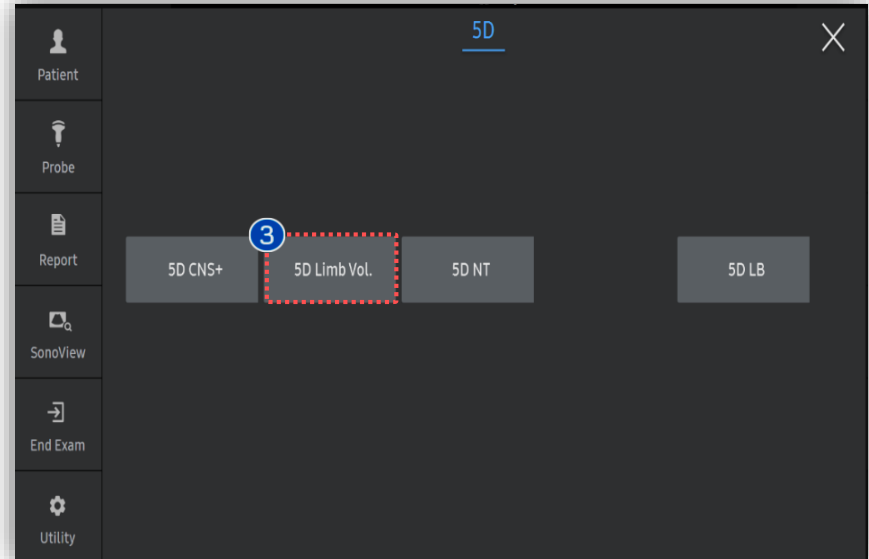
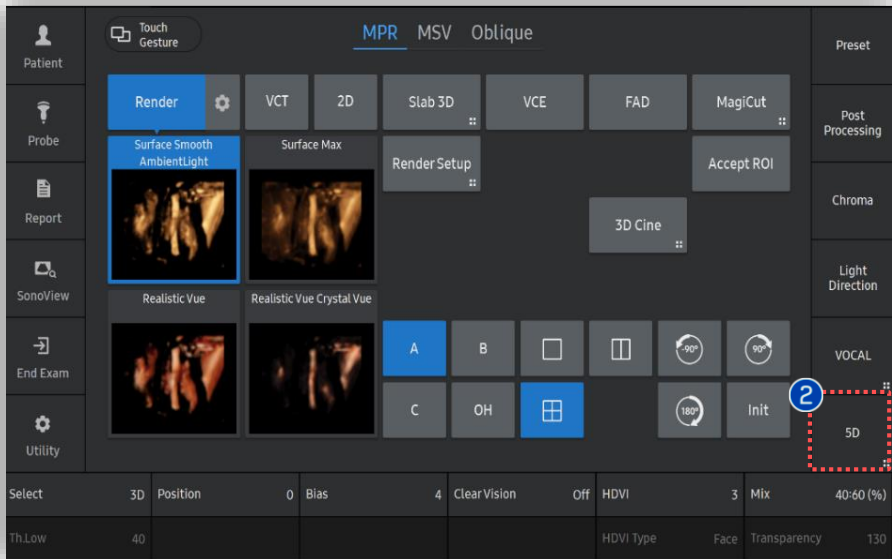


1	3D Button	Press [3D] button on the control panel.
2	5D Ready	Tap [5D Ready] to activate 5d features.
3	5D Limb Vol.	Tap [Limb Vol.] to activate 5D Limb Vol.™
4	Preset	Select preferred preset between default and users. Each 5D feature could have own preset parameters.
5	Parameters	3D [Scan Angle] and [Scan Quality] are customizable. ✓ Recommended 3D scan angle <ul style="list-style-type: none"> • 2nd Trimester : 40-45 • Early 3rd Trimester : 55-65 • Late 3rd trimester : 70-Max Angle
6	Scan Acquisition Tips	Before 3D acquisition, refer to the '5D Limb. Vol. Guide' on the left top. ✓ Scan Acquisition Tips <ul style="list-style-type: none"> • Adjust image depth to fill at least two-thirds of the screen. • Optimize gain to enhance limb soft tissue borders. • Adjust size and position of 3D ROI to include entire limb (bone + soft tissue). • Breath - hold during 3D sweep to reduce motion artifact. • Obtain volume acquisition when fetus is not moving.

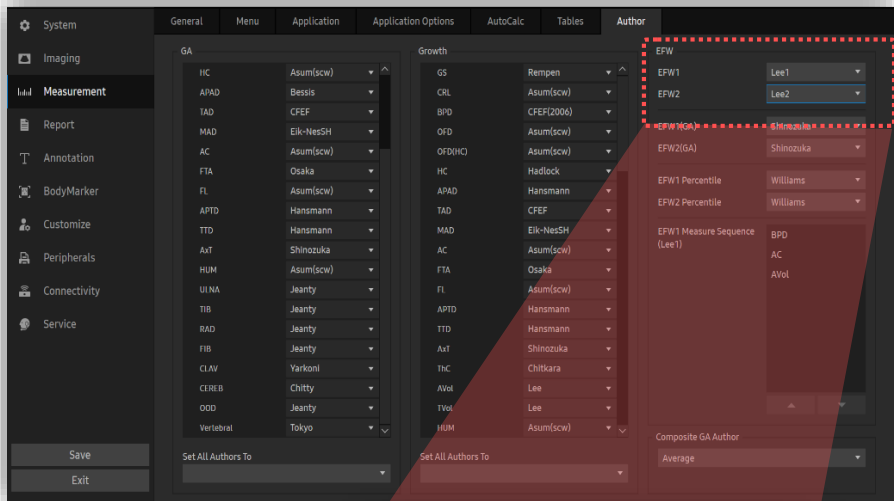
2. Activate 5D Limb Vol.™ (After 3D Acquisition)



1	Volume acquisition	Find long bone structures such as femur, tibia, fibular, humerus, radius and ulna.
2	5D	Tab to activate [5D] features.
3	5D Limb Vol.	Tab the [Limb Vol.] to activate it.



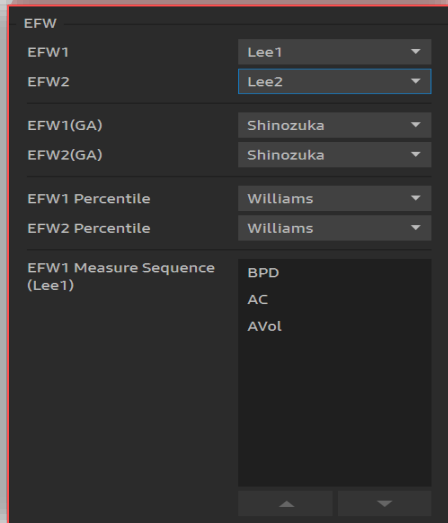
3. Assign table



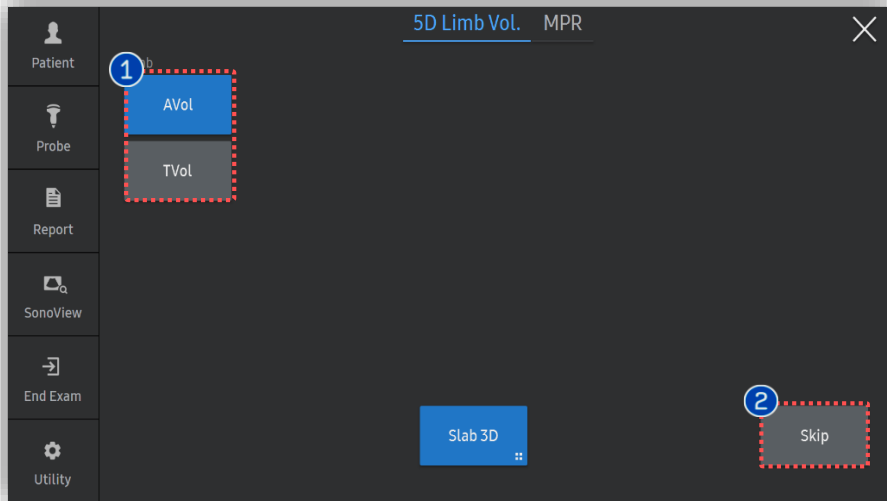
1 5D Button

Go to [Measurement], assign 'Lee1 or Lee2' EFW table.
(Measurement > Author > EFW)

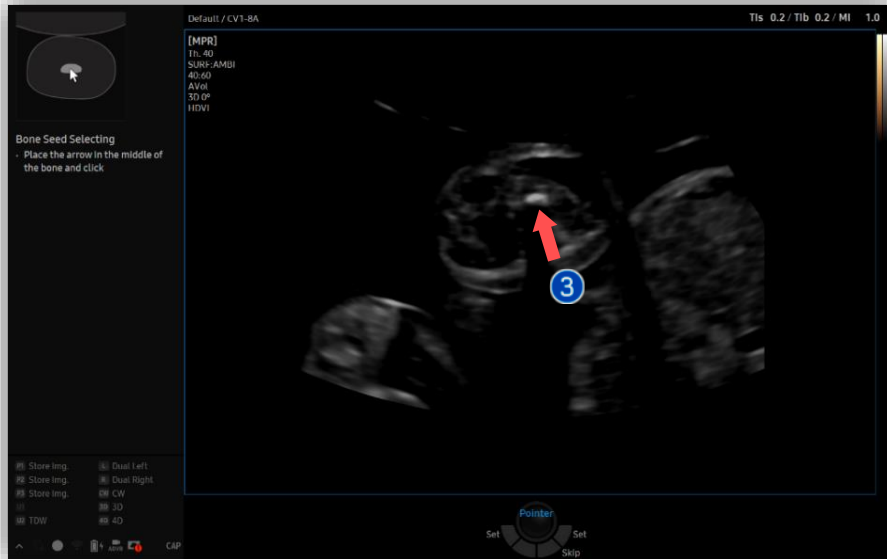
**Lee1: A Vol. / Lee2: T Vol.*



4. Bone Editing

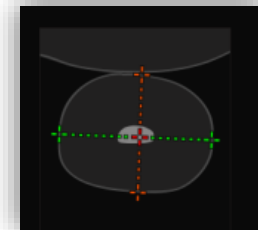
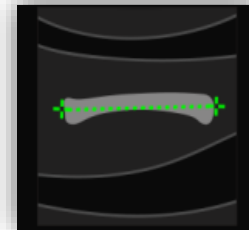


① Limb Type	Select limb type between arm (AVol) or leg (TVol).
② Skip	To Skip [Bone Editing] process, tap [Skip].
③ Bone Editing (Optional)	If you do not skip [Bone Editing], place the arrow on the middle of bone and [Set].

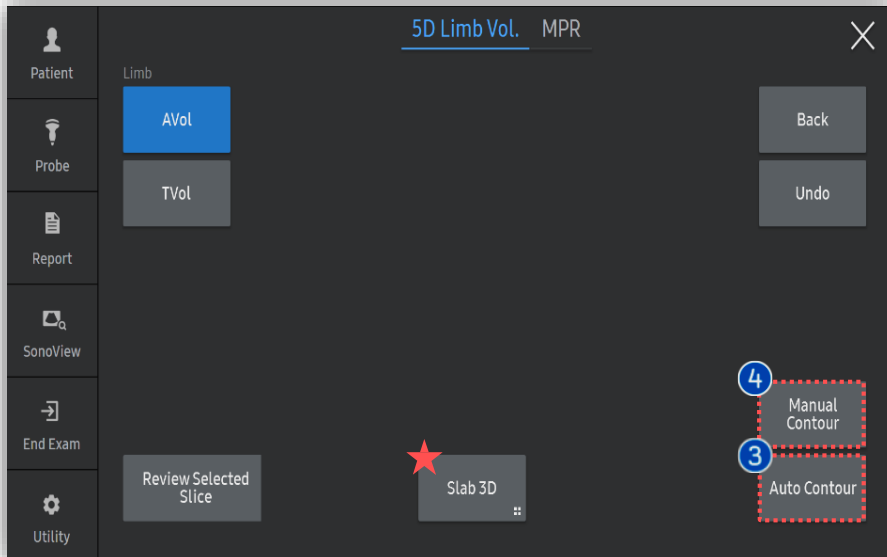
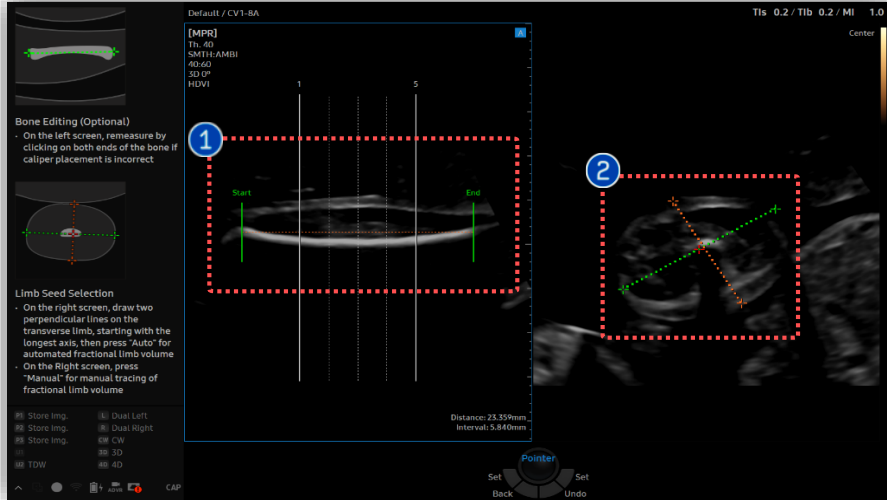


★ Tips

In case of using [Skip] on this progress, next two step which is [Bone Editing] and [Limb Seed Selecting] should be done for more accurate result.



6. Bone Editing and Limb Seed



1 Bone Editing	Re-measure by clicking on the both ends of the bone if auto caliper placement is incorrect.
2 Limb Seed	Draw two perpendicular lines on the transverse limb, starting with the longest axis, then press [Auto Contour] or [Manual Contour].
3 Auto Contour	Locate and measure the volume of fetal limbs automatically.
4 Manual Contour	Locate and measure the volume of fetal limbs manually by using contour tool.

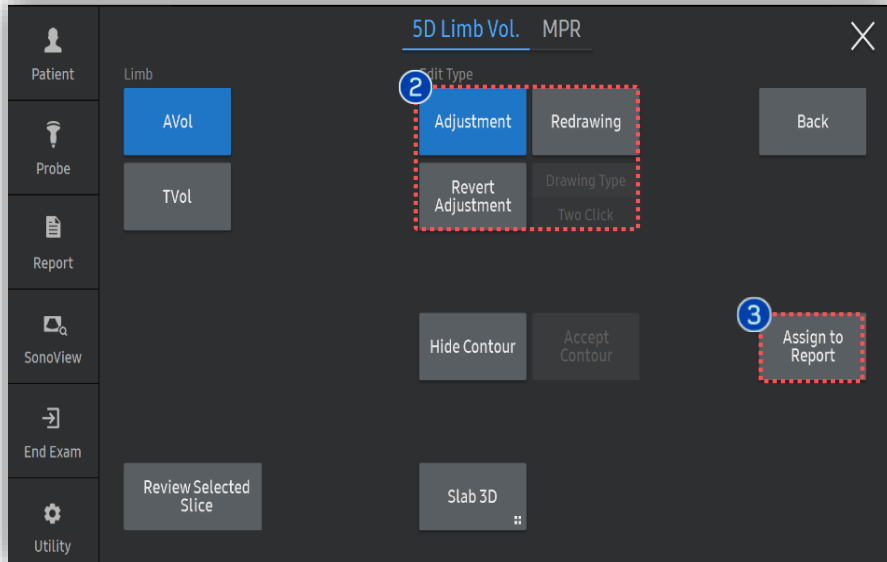
★ Tips

Slices of a 3D image will be displayed as images rendered in 3D. You may select [Slab 3D Type] among Surface, X-ray, Max and Min.

7. Result and Edit



<p>1 Result</p>	<p>3D rendered limb image and volume data will be provided at the bottom right.</p>
<p>2 Edit Type</p>	<p>When edit is needed select proper type of edit among Adjustment, Redrawing and Revert Adjustment.</p>
<p>3 Assign to Report</p>	<p>Tap to apply calculated result including Limb Vol. and EFW to the report.</p>



8. 5D Limb Vol.™ result in Report

SAMSUNG MEDISON

ID	IJ-C21	Name	27W	
Date of Birth(Age)		Gender	Exam Date 2021-09-14	
Indication				
Diag. Physician	Ref. Physician	Operator		

OB

LMP	GA(Clin)	EDD(GA)	Gravida	Para
Composite GA Average	GA(AUA)	EDD(AUA)	Ectopic	Aborta
DOC	Ovulation Date			
EFW1	Lee1	BPD,AC,AVol	3527 g	(7lb 12oz) Williams
EFW2	Lee2	BPD,AC,TVol	2036 g	(4lb 8oz) 33w2d Williams

Fetal Biometry

		m1	m2	m3	GA	
BPD	16.53	16.53			cm	Last Asum(scw)
AC	37.53	37.53			cm	Last Asum(scw)
HC	38.11	38.11			cm	Last Asum(scw)
AVol	18.20	16.80	18.20		ml	Last
TVol	17.80	17.80			ml	Last

2D Calculations

HC/AC	1.02	(~)	Campbell
-------	------	-------	----------

1 Report

Limb volume and EFW(Estimated Fetal Weight) by obtained limb volume will be displayed.

- The features, options may not be commercially available in some countries.
- Sales and shipments are effective only after the approval by the regulatory affairs. Please contact your local sales representative for further details.
- This Quick guide does not include all of the details of instruction, for more detail, please refer to V series User Manual.
- Do not distribute this document to customers unless relevant regulatory and legal affairs officers approve such distribution.
- This User Quick Guide is based on V series V1.05.
- Disclaimer: Some Images in this content were obtained from other system.

SAMSUNG MEDISON CO., LTD.

© 2024 Samsung Medison All Rights Reserved.

Samsung Medison reserves the right to modify the design, packaging, specifications, and features shown herein, without prior notice or obligation.