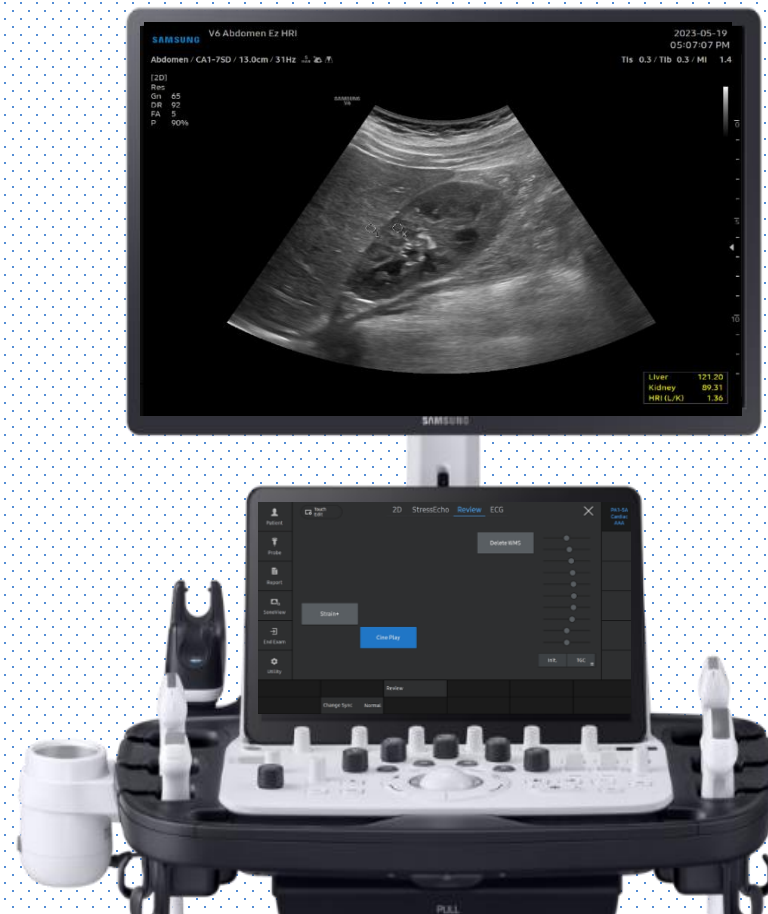
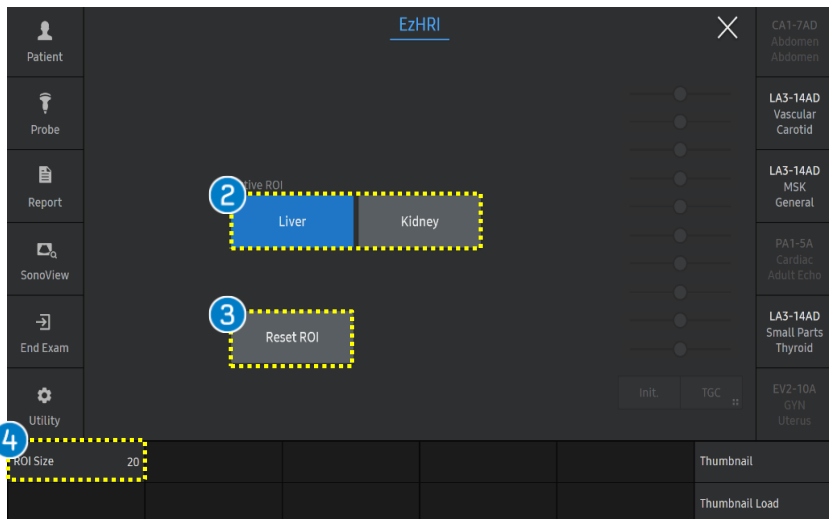
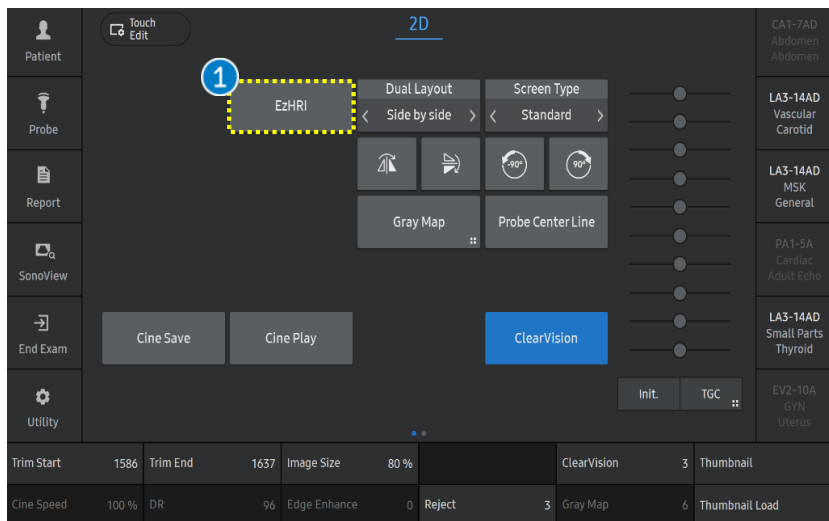


EZHRI™

V series Quick Guide



1. Start EzHRI™



Acquire longitudinal hepato renal view of kidney and liver at the same screen.

Try to avoid shadowing and motion artifacts during the scanning.

1 EzHRI	Activate the [EzHRI] on frozen 2D mode.
2 Active ROI	To change ROI position and size, choose the desired ROI using the [Active ROI] button or the [Change] key.
3 Reset ROI	Tap the [Reset ROI] button on the touch screen. Then all ROI will be restored initial position.
4 ROI Size	It could change ROI size.
5 Set	Confirm the result value by pressing the [Set] button on the control panel. Then, the result value is saved and assigned to the report.

2. The result of EzHRI™



ID	Name		
Date of Birth(Age)	Gender	Exam Date	2023-05-19
Indication			
Diag. Physician	Ref. Physician	Operator	
Abdomen			
Height	Weight		
EzHRI			
	1	2	3
Liver	101.45	87.55	101.09
Kidney	102.40	93.68	81.21
HRI (L/K)	0.99	0.93	1.24
	4	5	
Liver	83.32	110.12	
Kidney	63.42	89.32	
HRI (L/K)	1.31	1.23	

1 Result	<ul style="list-style-type: none"> The result 						
	<table border="1"> <tr> <td>Liver</td> <td>121.20</td> </tr> <tr> <td>Kidney</td> <td>89.31</td> </tr> <tr> <td>HRI (L/K)</td> <td>1.36</td> </tr> </table>	Liver	121.20	Kidney	89.31	HRI (L/K)	1.36
	Liver	121.20					
Kidney	89.31						
HRI (L/K)	1.36						
<table border="1"> <tr> <td>Liver</td> <td>The mean brightness level within the ROI on Liver</td> </tr> <tr> <td>Kidney</td> <td>The mean brightness level within the ROI on Kidney</td> </tr> <tr> <td>HRI (L/K)</td> <td>The ratio of the mean brightness levels of the liver and renal parenchyma $HRI \text{ (Hepato renal index)} = \frac{\text{mean brightness of liver}}{\text{mean brightness of kidney}}$ </td> </tr> </table>	Liver	The mean brightness level within the ROI on Liver	Kidney	The mean brightness level within the ROI on Kidney	HRI (L/K)	The ratio of the mean brightness levels of the liver and renal parenchyma $HRI \text{ (Hepato renal index)} = \frac{\text{mean brightness of liver}}{\text{mean brightness of kidney}}$	
Liver	The mean brightness level within the ROI on Liver						
Kidney	The mean brightness level within the ROI on Kidney						
HRI (L/K)	The ratio of the mean brightness levels of the liver and renal parenchyma $HRI \text{ (Hepato renal index)} = \frac{\text{mean brightness of liver}}{\text{mean brightness of kidney}}$						
2 Report	Select [Report] button on the touch screen and the result value is saved on the report.						

- The features, options may not be commercially available in some countries.
- Sales and shipments are effective only after the approval by the regulatory affairs. Please contact your local sales representative for further details.
- This Quick guide does not include all of the details of instruction, for more detail, please refer to V series User Manual.
- Do not distribute this document to customers unless relevant regulatory and legal affairs officers approve such distribution.
- This User Quick Guide is based on V series V1.05.
- Disclaimer: Some Images in this content were obtained from other system.

SAMSUNG MEDISON CO., LTD.

© 2024 Samsung Medison All Rights Reserved.

Samsung Medison reserves the right to modify the design, packaging, specifications, and features shown herein, without prior notice or obligation.