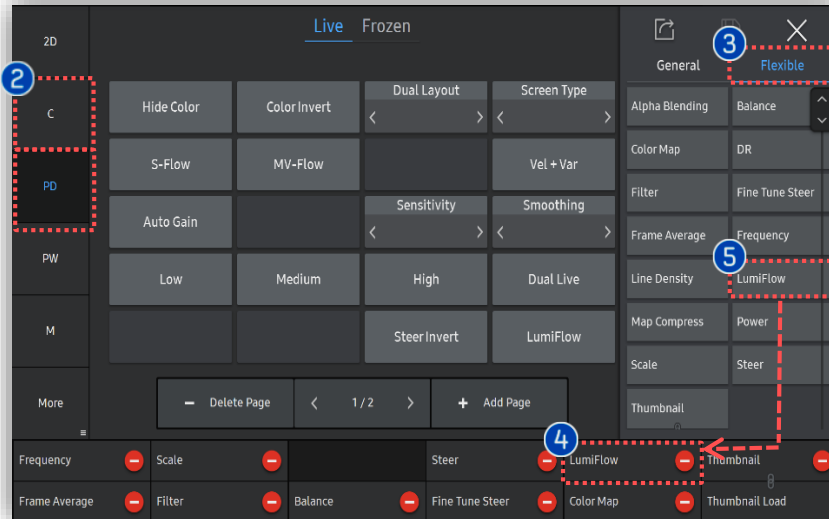
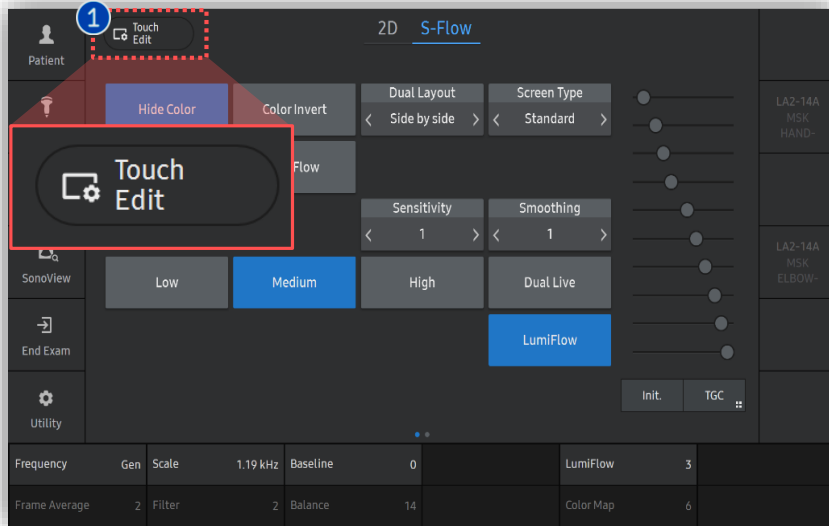


LumiFlow™

V Series Quick Guide



1. Touch Customize for LumiFlow™



1	Touch Customize	Tab the [Touch Customize] button placed on the top left of the touch panel.
2	Select an Image mode	Select eac3h Doppler mode. (C/PD/MV-Flow)
3	Flexible Menu	Tab the [Flexible menu] to customize the button arrangement on the flexible menu.
4	Arrange the Flexible menu	In order to locate the [LumiFlow] button on the 1 st page of flexible menu, make a room on it by deleting one of parameters.
5	Locate the LumiFlow	Locate the [LumiFlow] button on the 1 st page of touch screen so that user can frequently activate it on Doppler mode.

★ Tips

Since LumiFlow can be activated on the both Live and Frozen status, it's recommended to perform the "Touch Customize" job on the both modes.

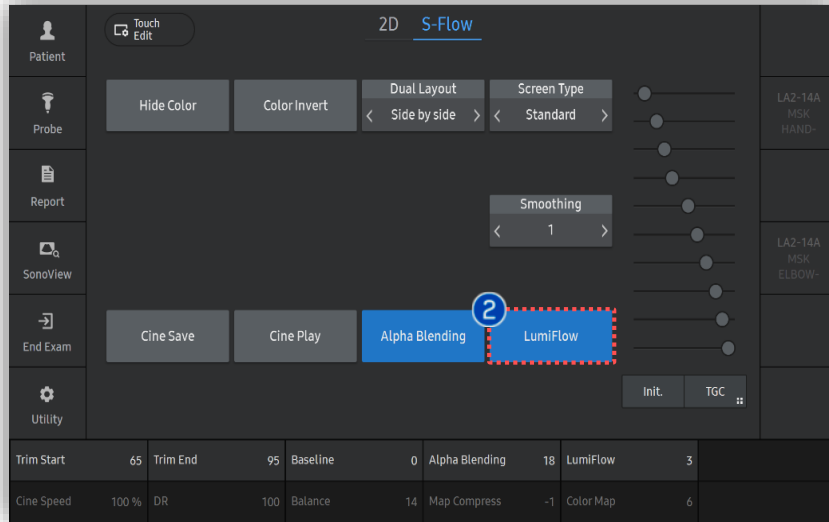
2. Flow image acquisition



1 Flow Image acquisition

Acquire a flow image with the structure you wish to apply LumiFlow.

3. Apply LumiFlow™



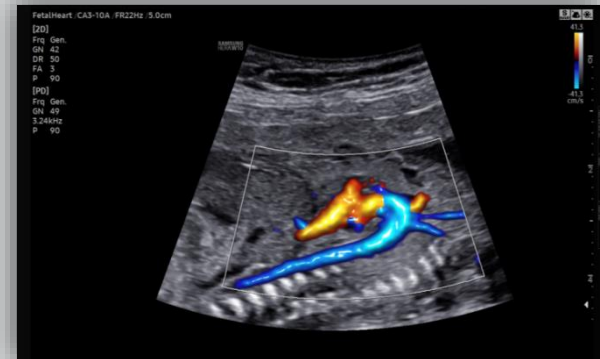
LumiFlow provides a 3D-like appearance to all of flow imaging mode. By applying the LumiFlow mode, it can help you to easily observe the hemodynamic flow within the vascular structure.

2 LumiFlow

Tab [LumiFlow] button on the touch screen to apply the LumiFlow mode on the frozen image and live scan.

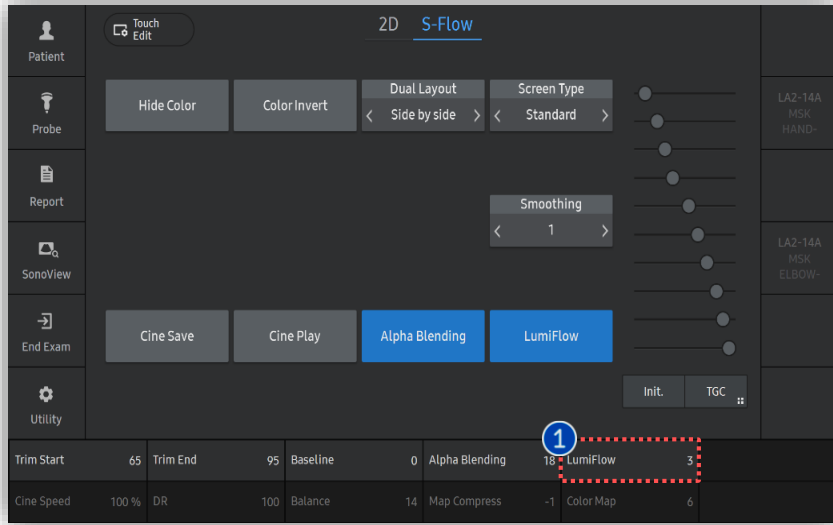


[S-Flow]



[After applying the LumiFlow on S-Flow]

4. Each Flow mode with LumiFlow™



① Each Flow mode with LumiFlow

LumiFlow is applicable to each flow imaging mode to provide a volumetric visualization effect on it. Also, LumiFlow is available on both the Live mode and Frozen mode.



[Color Doppler with LumiFlow]

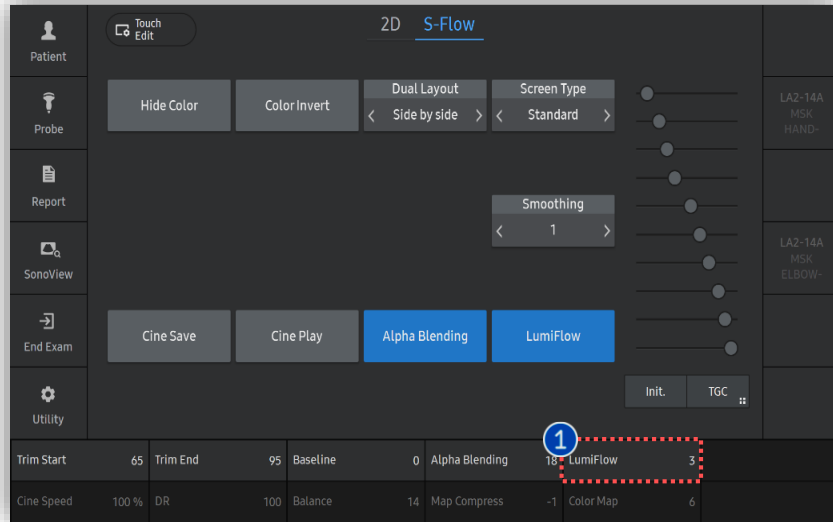


[S-Flow with LumiFlow]



[MV-Flow with LumiFlow]

5. Adjust the Index of LumiFlow™



1 Adjust Index (1-5)

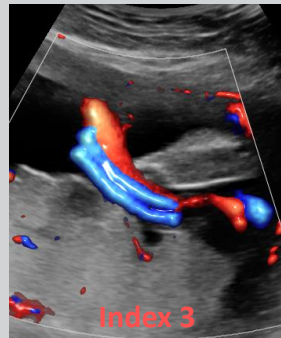
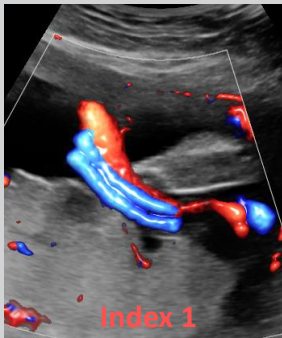
You can adjust the index value depending on the vessel size and characteristics.

Low Index (1-2)

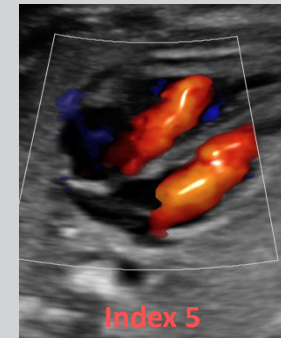
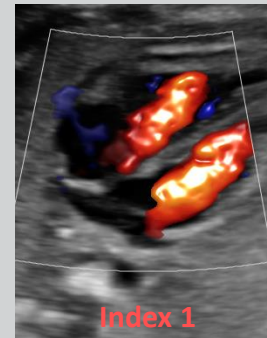
The lower index value is more appropriate for imaging the tiny vessels **due to its more detailed expression.**

High Index (3-5)

The higher index value is more appropriate for imaging the relatively large vessels and heart chambers **due to its smoother expression.**

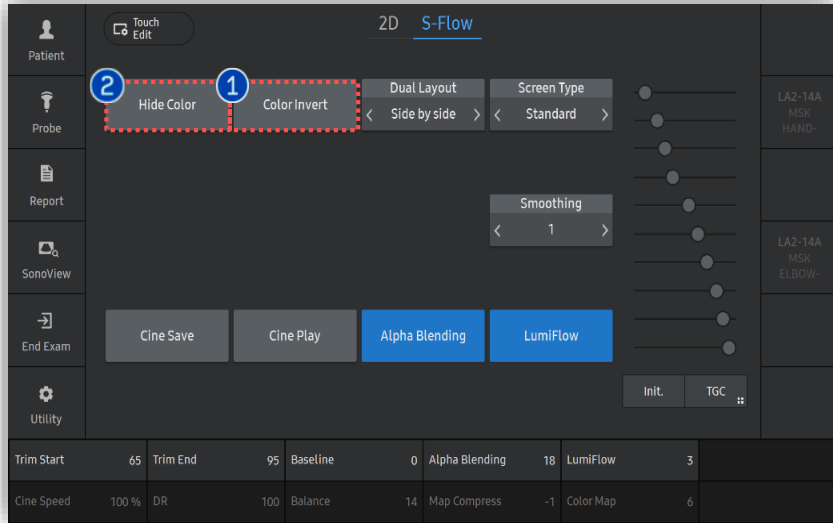


[Umbilical Cord]



[Fetal Heart]

6. Display LumiFlow™



1 Color Invert

As you tab [Color Invert] button on the touch screen, the color bar is inverted, which also inverts the displayed color image.

2 Hide Color

Color images are not displayed so that you can observe the background grayscale image without overlaid color display.



[Color Invert]



[Color Off]

- The features, options may not be commercially available in some countries.
- Sales and shipments are effective only after the approval by the regulatory affairs. Please contact your local sales representative for further details.
- This Quick guide does not include all of the details of instruction, for more detail, please refer to V series User Manual.
- Do not distribute this document to customers unless relevant regulatory and legal affairs officers approve such distribution.
- This User Quick Guide is based on V series V1.05.
- Disclaimer: Some Images in this content were obtained from other system.

SAMSUNG MEDISON CO., LTD.

© 2024 Samsung Medison All Rights Reserved.

Samsung Medison reserves the right to modify the design, packaging, specifications, and features shown herein, without prior notice or obligation.