

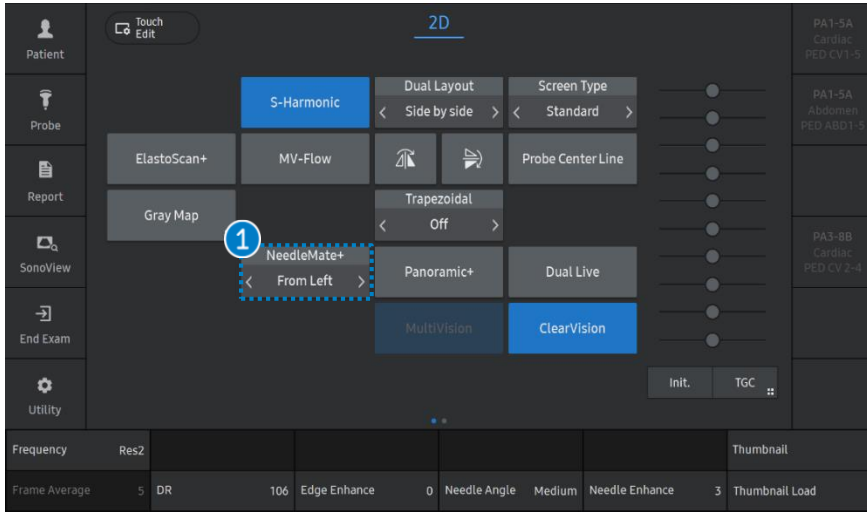
NeedleMate+

V series Quick Guide



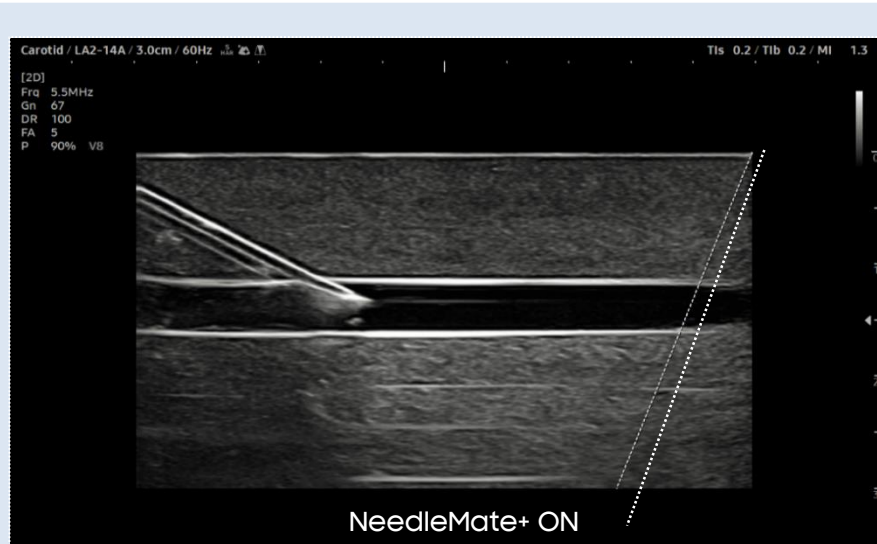
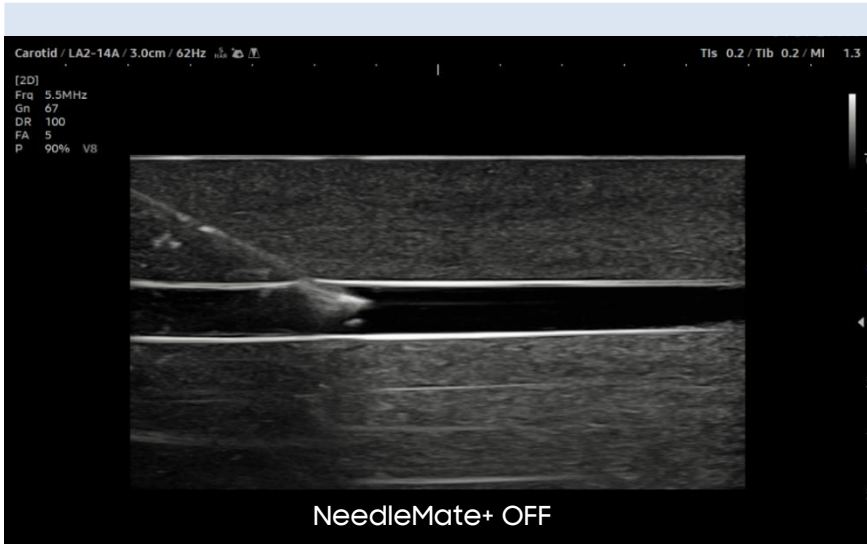
NeedleMate+

1. Start NeedleMate+



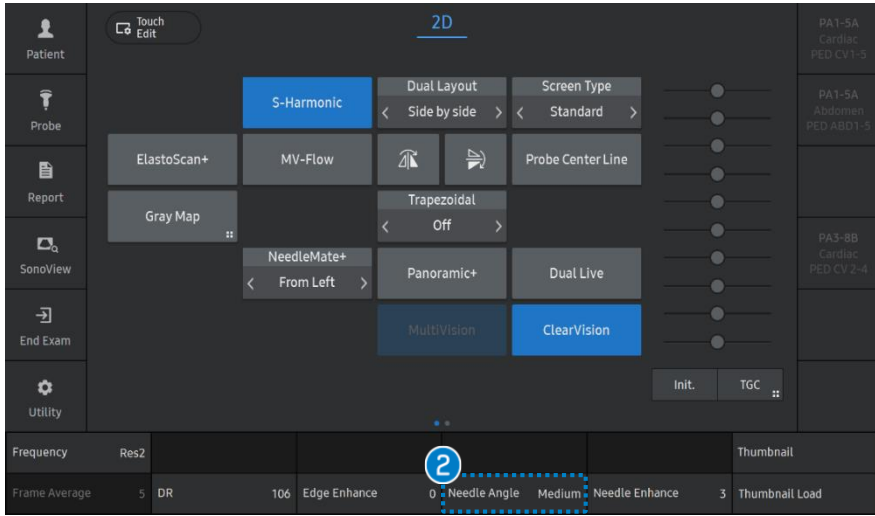
1 Direction

Before starting Needle Mate, select probe and preset that support Needle Mate. Select the area for biopsy and activate the [Needle Mate+] button. And then set the direction of the biopsy needle, either [From Left] or [From Right].



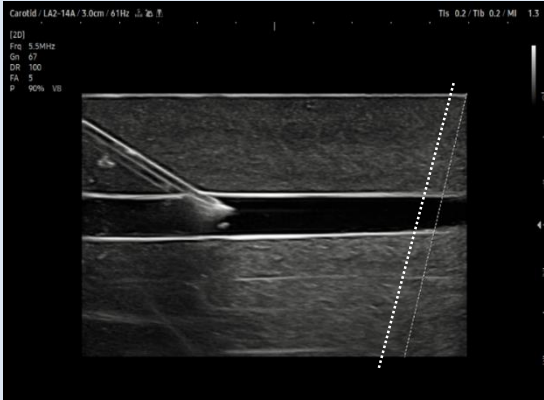
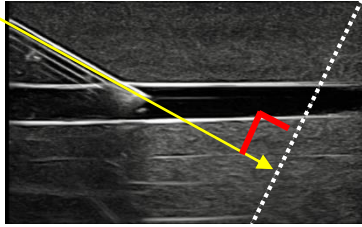
NeedleMate+

2. Needle Angle

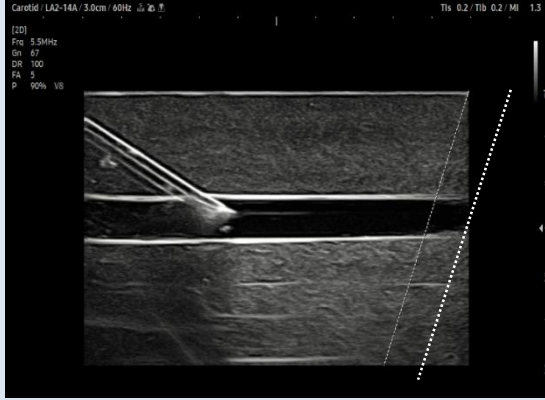


2 Needle Angle You can set the angle of the biopsy needle. There are three types of angle: Shallow, Medium, and Steep.

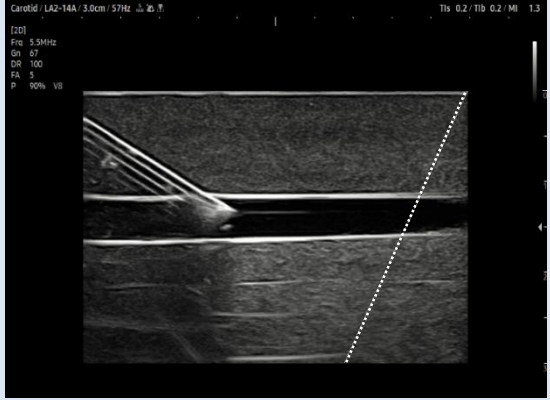
★Tips It is important for the angle of the inserted needle and [Needle angle] to be 90 degrees.



[Shallow]



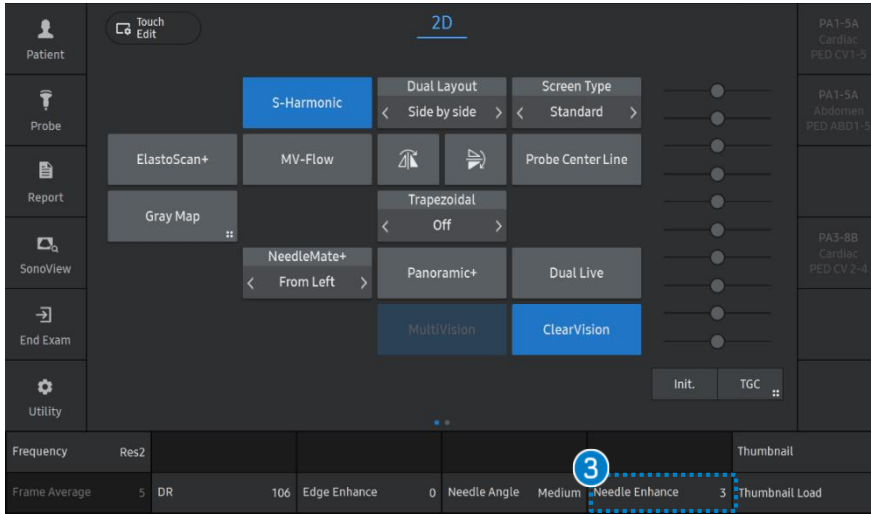
[Medium]



[Steep]

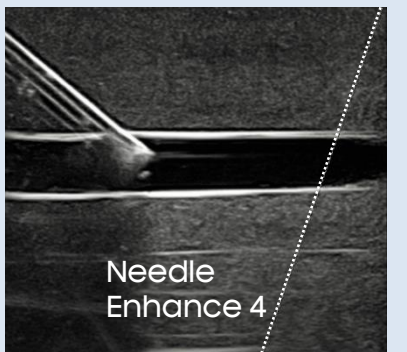
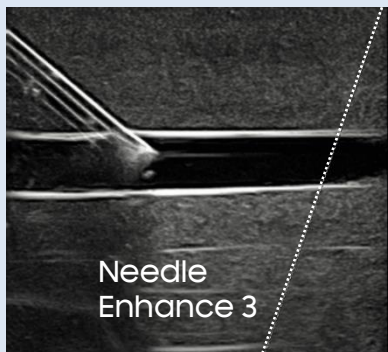
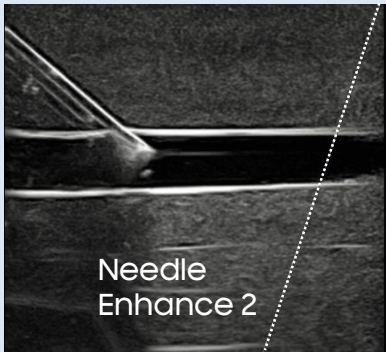
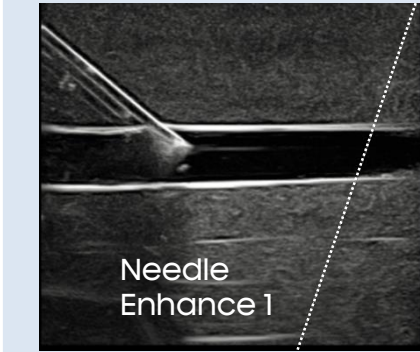
NeedleMate+

3. Needle Enhance



3 Needle Enhance You can set the enhancement and thickness of the biopsy needle. (Up to 4 indices)

★Tips If [Needle Angle] and [Needle Enhance] are not seen on the flexible menu, check the flexible menu in Touch Edit.



- The features, options may not be commercially available in some countries.
- Sales and shipments are effective only after the approval by the regulatory affairs. Please contact your local sales representative for further details.
- This Quick guide does not include all of the details of instruction, for more detail, please refer to V series User Manual.
- Do not distribute this document to customers unless relevant regulatory and legal affairs officers approve such distribution.
- This User Quick Guide is based on V series V1.05.
- Disclaimer: Some Images in this content were obtained from other system.

SAMSUNG MEDISON CO., LTD.

© 2024 Samsung Medison All Rights Reserved.

Samsung Medison reserves the right to modify the design, packaging, specifications, and features shown herein, without prior notice or obligation.