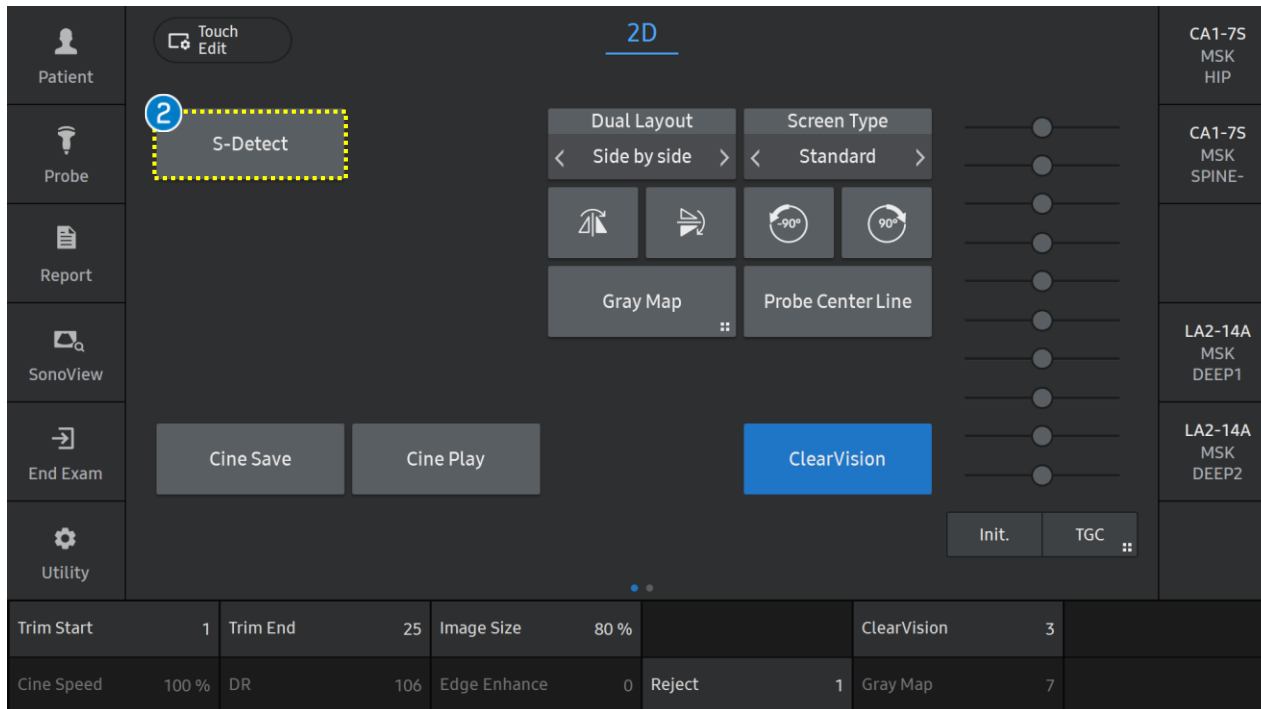


S-Detect™ *for Breast*

V series Quick Guide



1. Start S-Detect™ for Breast



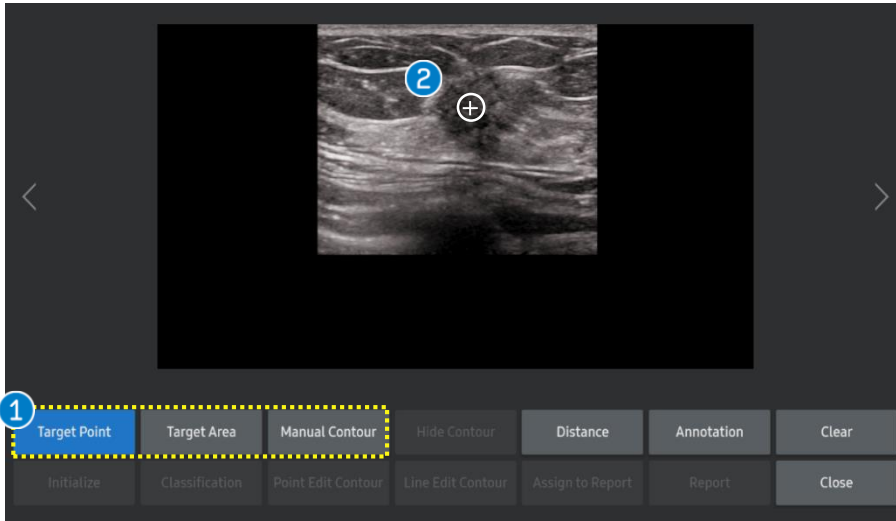
① Image Acquisition

Acquire the image including lesion in 2D mode and press the [Freeze] button.

② Start a S-Detect

Tap [S-Detect] on the touch screen.

2. Designate the ROI



1 Detection method

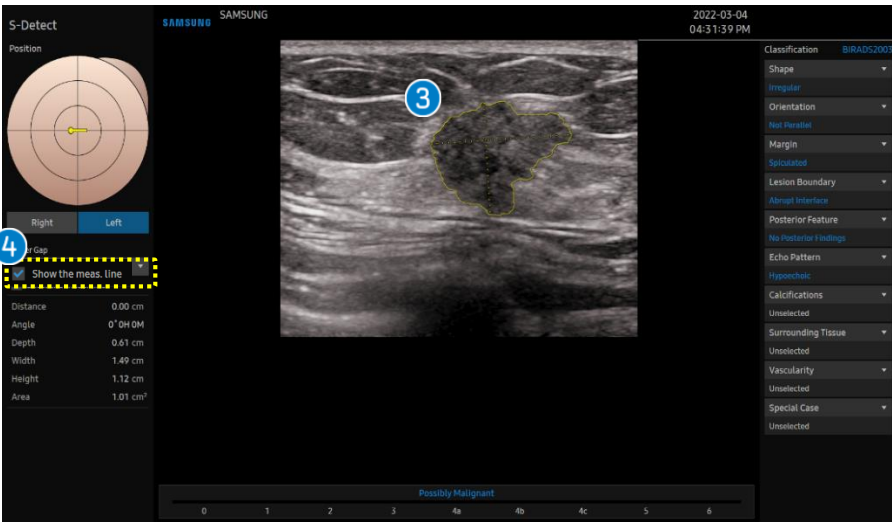
- Target Point (Default)
- Target Area
- Manual Contour

2 Target Point

Touch the center of the lesion on the touchscreen.
Or place the cursor on the center of the lesion on the monitor and press the [Set] button.

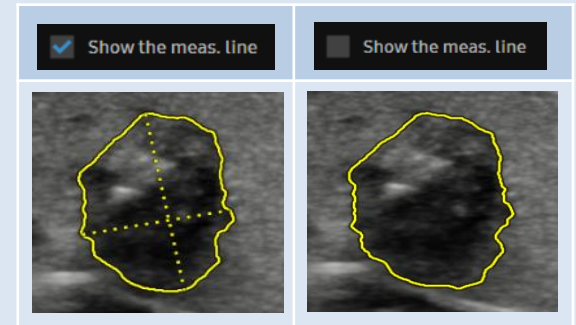
3 Detect the boundary

Lesion boundary is automatically detected and displayed as a green contour.

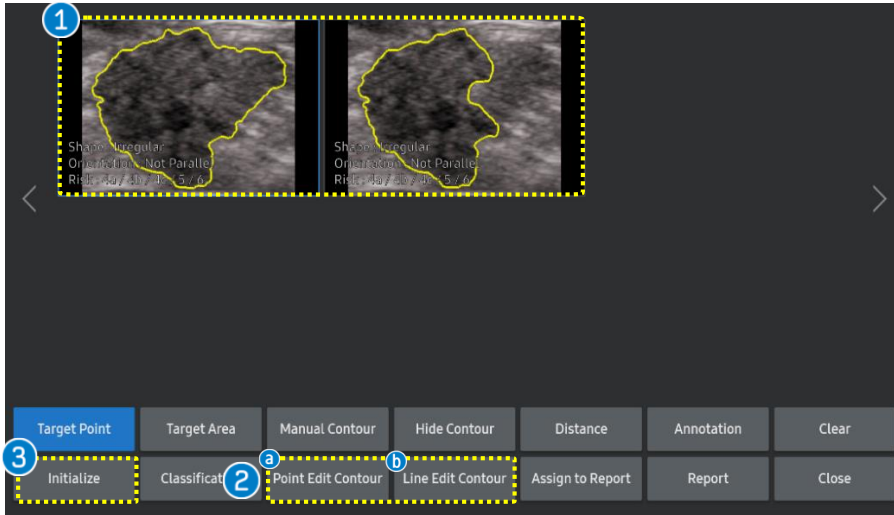


4 Show the meas. line

It is to display the measurement line (height, width) of the lesion.



3. Select the Candidate and Edit



1 Candidates

Candidate images are provided on the touch screen so you can choose the most suitable image. Select one image.

2 Edit Contour

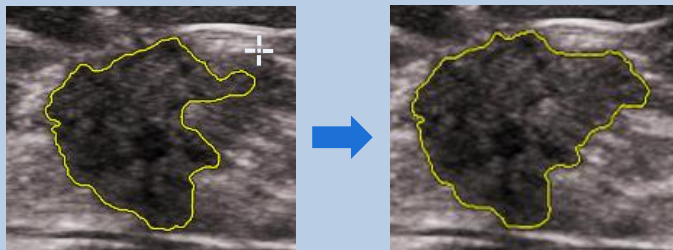
If necessary, you can edit the contour of the selected candidate by tapping [Point Edit Contour] or [Line Edit Contour] on the touch screen.

3 Initialize

To reset all results, tap the [Initialize] button on the touch screen.

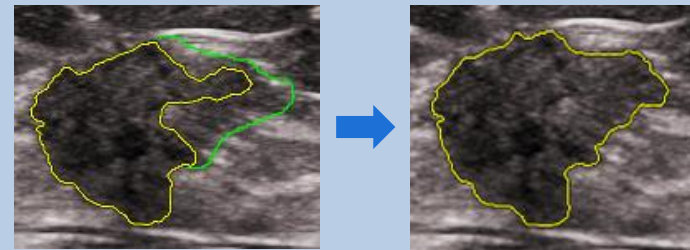
a Point Edit contour

Place the cursor close to the part of the contour that you want to modify and press the [Set] button.

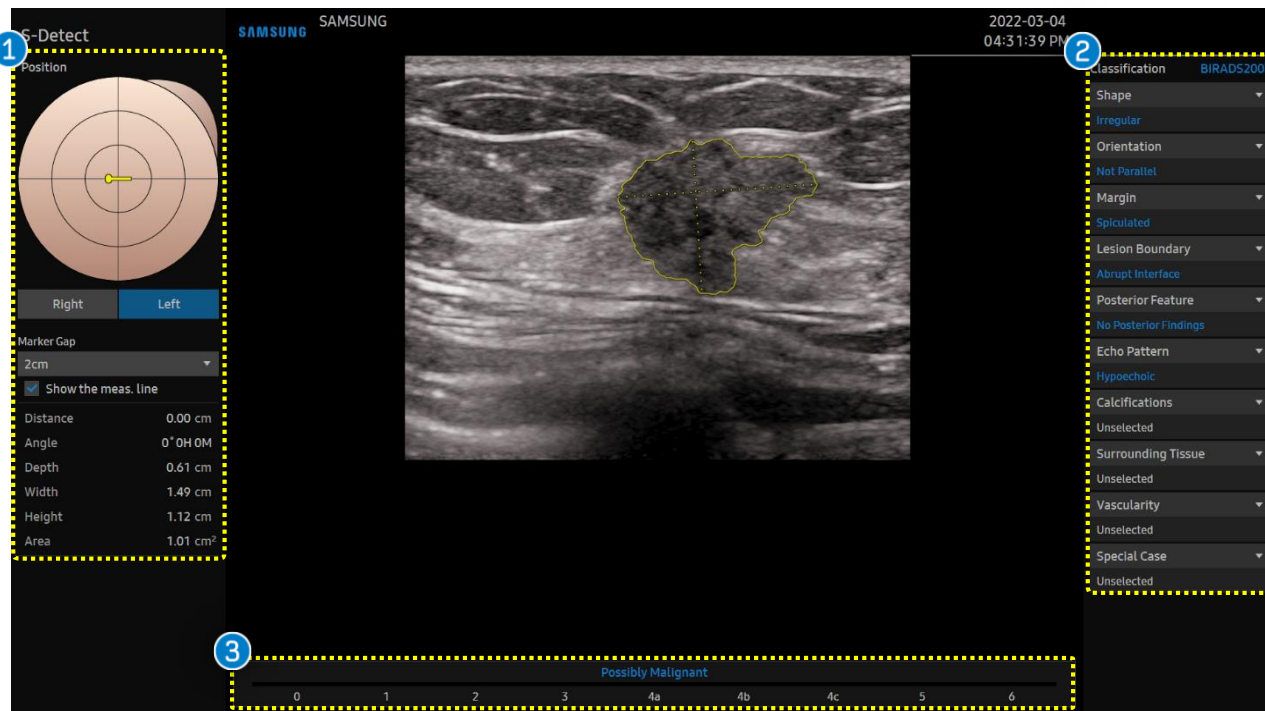


b Line Edit contour

Draw the new boundary (green color) manually using trackball and press the [Set] button.



4. Select the Candidate and Edit



1 Location information Area	Provides information about the location and the size of the lesion.
2 Classification	Provides the BI-RADS® Lexicon Classification for the lesion. 6 Classifications (Blue color) are automatically provided. 4 Classifications (White color) are 'Unselected', so it can be selected manually by users.
3 Description	S-Detect only suggests whether the lesion tends to be malignant or benign.

5. Result page: Mark the position

1 Position

2 Right Left

3 Marker Gap

Marker Gap

2cm

Show the meas. line

Distance	0.00 cm
Angle	0° 0H 0M
Depth	0.61 cm
Width	1.49 cm
Height	1.12 cm
Area	1.01 cm ²

Right Left

Marker Gap

2cm

1cm

2cm

3cm

4cm

5cm

Height 1.15 cm

Area 1.04 cm²

S-Detect SAMSUNG SAMSUNG

2022-03-04 04:31:39 PM

Classification BIRADS2003

Shape Irregular

Orientation Not Parallel

Margin Spiculated

Lesion Boundary Abrupt Interface

Posterior Feature No Posterior Findings

Echo Pattern Hypoechoic

Calcifications Unselected

Surrounding Tissue Unselected

Vascularity Unselected

Special Case Unselected

Possibly Malignant

0 1 2 3 4a 4b 4c 5 6

1 Position

Locate the probe marker(yellow bar) according to lesion's location with the [Set] button. Use the [Angle] button on the control panel to rotate the marker.

2 Laterality

Select right or left breast with the [Set] button.

3 Marker Gap

Choose the size of the marker gap to change the scale. This indicates the distance from the nipple depending on the size of the patient's breast.

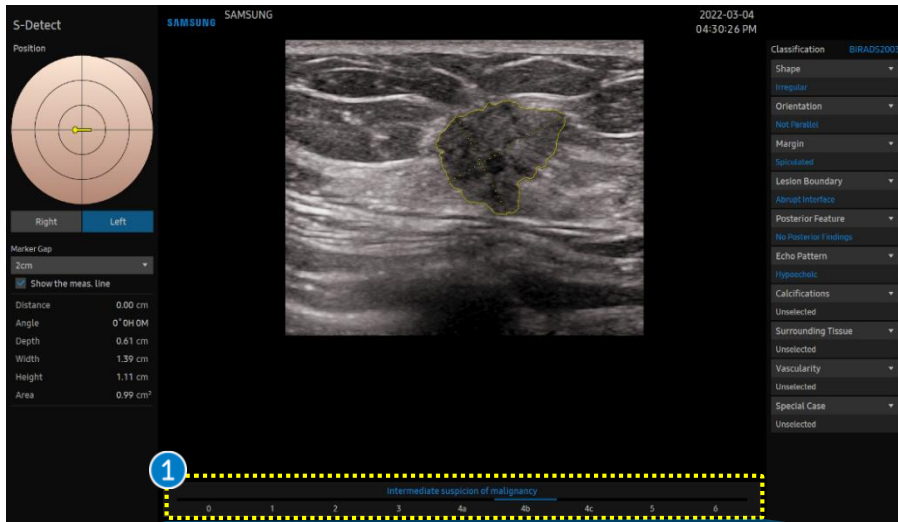
6. Result page: Edit the classification

The image shows a sequence of three screenshots illustrating how to edit a classification in the S-Detect for Breast software. The first screenshot shows the main result page with a classification dropdown menu highlighted by a yellow dashed box and a blue circle labeled '1'. The second screenshot shows the 'Classification' dropdown menu expanded, with the 'ECHO PATTERN' option highlighted by a yellow dashed box and a blue circle labeled 'a'. The third screenshot shows the 'ECHO PATTERN' sub-menu expanded, with the 'Complex Echogenicity*' option highlighted by a yellow dashed box and a blue circle labeled 'b'. The modified classification is shown in yellow text in the original image.

1 Classifications

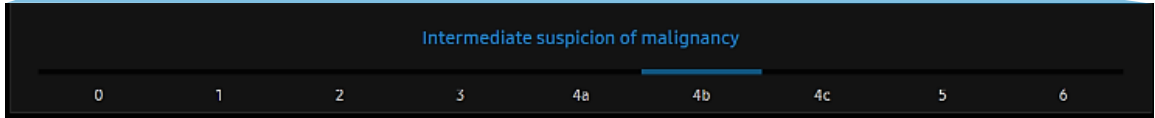
- a** Click the title of classification that you want to modify.
- b** Edit the result. Modified Classification is represented in yellow. Classifications can also be edited on the touch screen.

7. Result page: BI-RADS® Score

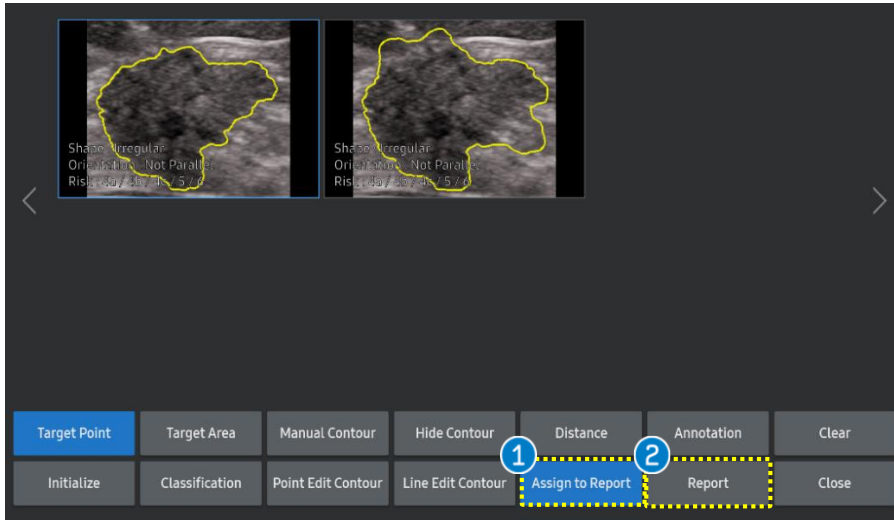


1 BI-RADS® score

Designate the specific BI-RADS® Assessment Score on the bottom of the screen to make the final decision.



8. Assign to Report



1 Assign to Report

If you want to add S-Detect results to report, tap the [Assign to Report] button on the touch screen.

2 Report

Tap the [Report] button on the touch screen to confirm the result of S-Detect.

2

ID	SAMSUNG	Name	
Date of Birth(Age)		Gender	Exam Date 2022-03-04
Indication			
Diag. Physician	Ref. Physician	Operator	
Left #1			
	Distance	0.00 cm	Possibly Malignant 4a ~ 6
	Depth	0.61 cm	Classification BIRADS2003
	Marker Gap	2 cm	Shape Irregular
	Width	1.49 cm	Orientation Not Parallel
	Height	1.12 cm	Margin Not Circumscribed(Spiculated)
	Area	1.01 cm ²	Lesion Boundary Abrupt Interface
	Angle	0.0 °	Posterior Feature No Posterior Findings
			Echo Pattern Hypochoic
			Calcifications Unselected
			Surrounding Tissue Unselected
		Vascularity Unselected	
		Special Case Unselected	

- The features, options may not be commercially available in some countries.
- Sales and shipments are effective only after the approval by the regulatory affairs. Please contact your local sales representative for further details.
- This Quick guide does not include all of the details of instruction, for more detail, please refer to V series User Manual.
- Do not distribute this document to customers unless relevant regulatory and legal affairs officers approve such distribution.
- This User Quick Guide is based on V series V1.05.
- Disclaimer: Some Images in this content were obtained from other system.

SAMSUNG MEDISON CO., LTD.

© 2024 Samsung Medison All Rights Reserved.

Samsung Medison reserves the right to modify the design, packaging, specifications, and features shown herein, without prior notice or obligation.